

Paratypes: 2 workers, 11 June 2010; 2 workers, 12 June 2010, 3 workers, 13 June 2010 with same data as holotype. Paratypes deposited in Punjabi University Patiala Ant Collection (PUPAC), Patiala, India. One paratype will be deposited at BMNH, Natural History Museum, London, UK and one at California Academy of Sciences, San Francisco, USA.

#### DESCRIPTION OF WORKER

Measurements of holotype worker: TL 5.68; HL 1.14; HW 0.78; ML 0.55; EL 0.20; SL 1.07; PW 0.69; WL 1.80; PL 0.56; PDW 0.48; PH 0.68 mm. Indices: CI 68; MI 70; OI 26; SI 137; LPI 121; DPI 86;

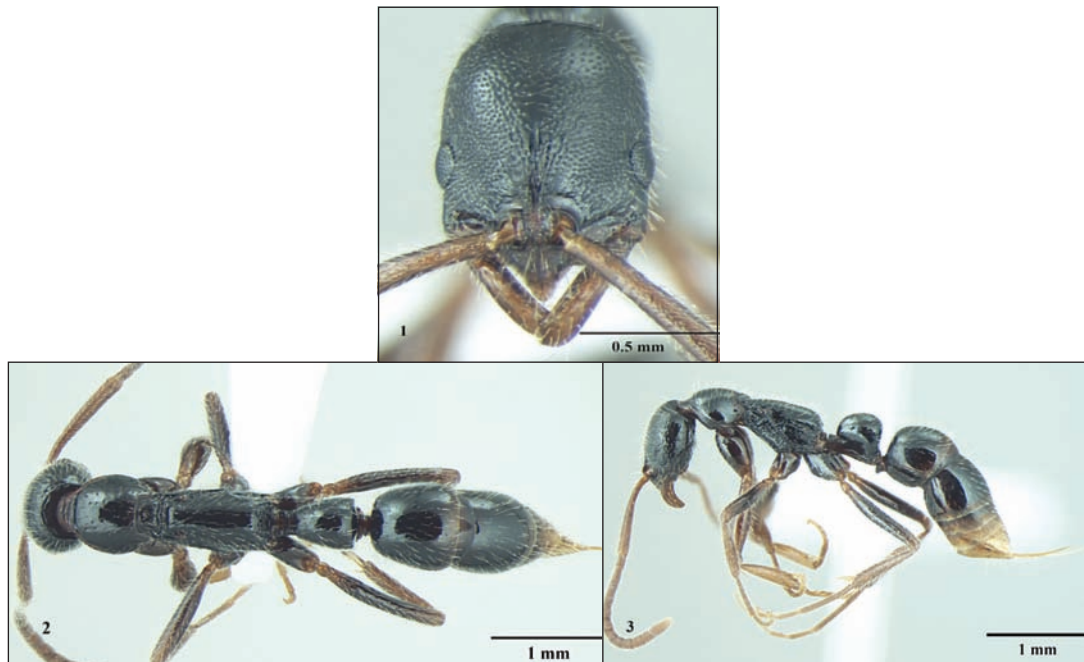
Measurement of paratype workers: Range of seven workers: TL 5.45-5.68; HL 1.10-1.14; HW 0.77-0.78; ML 0.54-0.55; EL 0.18-0.20; SL 1.02-1.07; PW 0.64-0.70; WL 1.77-1.80; PL 0.52-0.56; PDW 0.45-0.48; PH 0.61-0.68 mm. Indices: CI 67-71; MI 70-71; OI 23-26; SI 131-139; LPI 117-121; DPI 84-87.

Head: Head subrectangular in full-face view, somewhat wider anteriorly than posteriorly, posterior and lateral margins broadly convex;

anterior clypeal margin with triangular median lobe, anterior and lateral margins lamellate, apex rounded with single median seta, strongly carinate in middle; lateral lobe narrow, convex. Compound eye weakly convex, placed laterally, anterior to cephalic mid-length. Frontal groove deep, extending to posterior margin of eye. Mandible elongate, slightly arched, parallel-sided with weakly concave edentate masticatory margin, basal margin convex, basal angle with denticle. Scape surpasses posterior cephalic border by one-fifth its length; third antennal segment three-fifths as long as wide and one-quarter as long as second segment.

Mesosoma: Mesosoma with prominent metanotal groove dividing dorsal margin into large convex promesonotum and mostly flat metanotum-propodeum in lateral view; metapleural-propodeal suture effaced. Propodeal spiracle round, facing posterad; promesonotal suture distinct; mesonotum oval, much broader than long, divided in centre by a longitudinal groove. Posterolateral propodeal margins rounded; declivitous face subtriangular, wider posteriorly than anteriorly.

Metasoma: In lateral view, petiole subquadrate, anterior and posterior margins



**Figs. 1 – 3.** *Leptogenys lattkei* sp. nov. worker (1) Head, full-face view; (2) Body, dorsal view; (3) Body, lateral view.