

and shiny. Mesonotum shiny, mesopleuron punctate. Mesonotum with antero-dorsal part smooth, postero-dorsal part with a few irregular longitudinal striae. Antero-dorsal surface of propodeum with a few weak transverse striae, the rest of propodeum smooth. Petiole low, with long peduncle, its node narrower than postpetiole, postpetiole only a little longer than broad. Anterior surface of petiole concave in profile, posterior one convex, these two surfaces merge into a distinct antero-dorsal edge. Both petiole and postpetiole smooth and quite shiny. Base of first gastral tergite longitudinally striate; the rest of gaster smooth and shiny.

All smooth parts of head, mesosoma and anterior part of first gastral tergite with fine superficial reticulation (can be seen only with 80x magnification).

Except for apical funicular segments body without pubescence. Hairs on the body very sparse, long and white. Scape and tibia with decumbent hairs. Gaster with 4-5 long hairs, only at the posterior margins of each segment. Colour yellowish brown to reddish brown, head and mesosoma somewhat darker, scape and legs lighter.

Queens and males are unknown.

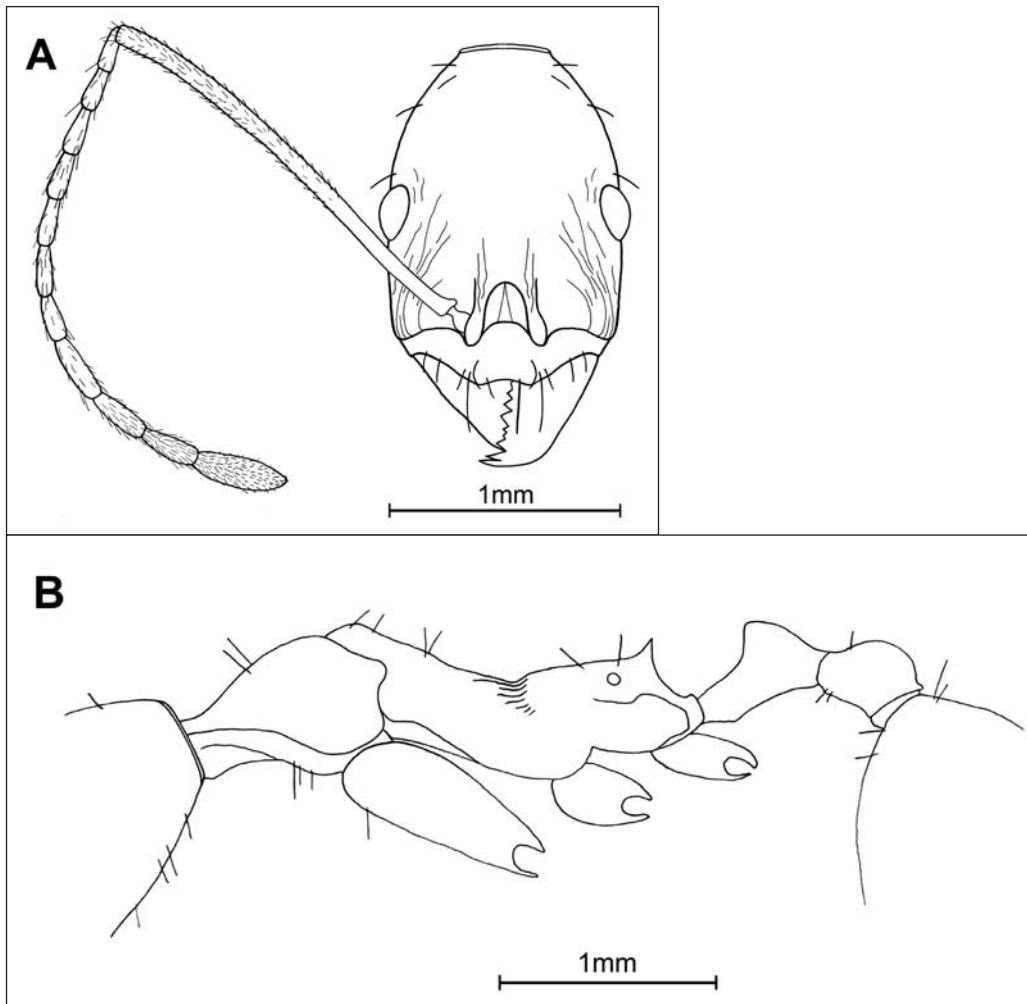


Fig. 1. Line drawings of holotype *Aphaenogaster iranica*, (A) Head, frontal view; (B) Mesosoma and waist, lateral view.