

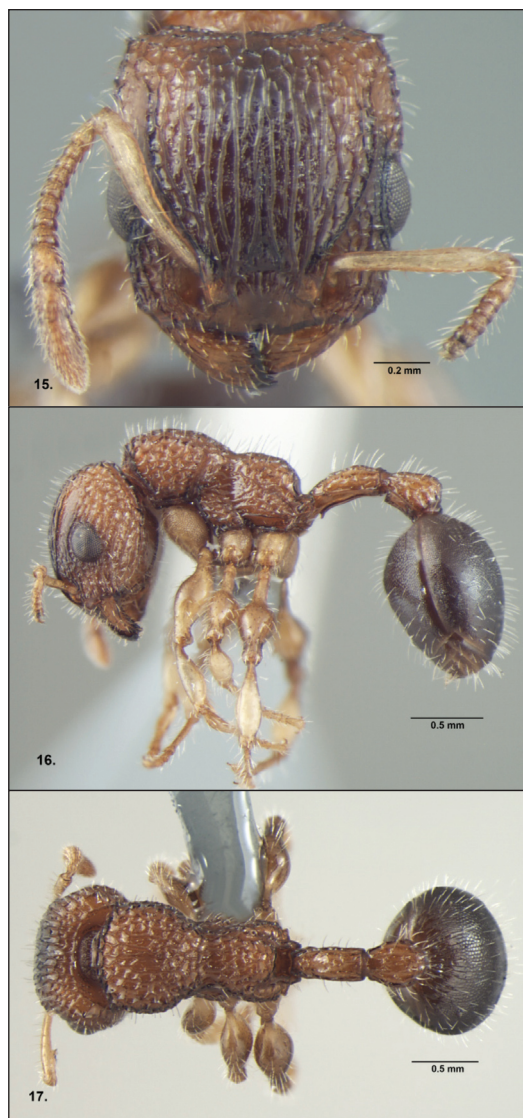
REMARKS. *Dilobocondyla gasteroreticulatus* sp. nov. is somewhat similar to *D. fouqueti* Santschi. However, this new species can be easily distinguished from *D. fouqueti* on the basis of the following combination of characters. The gaster in *D. fouqueti* is smooth and shiny but in *D. gasteroreticulatus* the whole of the gaster is reticulate and opaque (Fig. 11). Similarly the legs are shiny in *D. fouqueti*, while in *D. gasteroreticulatus* the legs are sculptured and subopaque. Other significant differences which separate it from *D. fouqueti* include: head with posterior corners dentate; frontal area distinct; humeral angles blunt, mid-dorsum of pronotum faintly longitudinally rugose; anepisternum and metapleuron rugoreticulate. In contrast in the case of *D. fouqueti* the posterior corners of the head are blunt; the frontal area is indistinct; the humeral angles are acute, the mid-dorsum of the pronotum is rugoreticulate, and the anepisternum and metapleuron are smooth and shiny. The above-stated distinguishing characters between these two species have been found to be consistent in gynes of both species treated during the present study as well. Some other significant distinguishing characters have been observed in gynes. These include the metapleuron being longitudinally rugose and the scutellum rugoreticulate in *D. gasteroreticulatus*, while in *D. fouqueti* the metapleuron is rugoreticulate and the scutellum is longitudinally rugose.

DISTRIBUTION AND HABITAT. This species has been found to be uncommon, and recorded from only two habitats during intensive surveys of Northwest Shivalik. The species has been collected from semi-arid environments, and seems to be arboreal in nature.

***Dilobocondyla propotriangulatus* sp. nov.**
(Figs. 15 – 17)

MATERIAL EXAMINED

HOLOTYPE: Worker, 25-26.v.2004, Yen Tu, (approx. 21.10168°N, 106.43094°E, 400 m), Bac Giang, North Vietnam, coll. Bui & Eguchi; VNMN.



Figs. 15 – 17. *Dilobocondyla propotriangulatus* sp. nov., Worker: (15) Head in full-face view; (16) Body, lateral view; (17) Body, dorsal view.

WORKER

Dimensions (Holotype):

HL 1.09; HW 1.07; ED 0.30; SL 0.67; MFC 0.45; PRNW 0.81; ML 1.62; PTL 0.61; PTW 0.24; PTH 0.24; PPTL 0.46; PPTW 0.35; PPTH 0.35; GL 1.21; CI 98.17; SI 62.62; PTWI 39.34; PPTWI 76.09; TL 4.99 (1 measured)