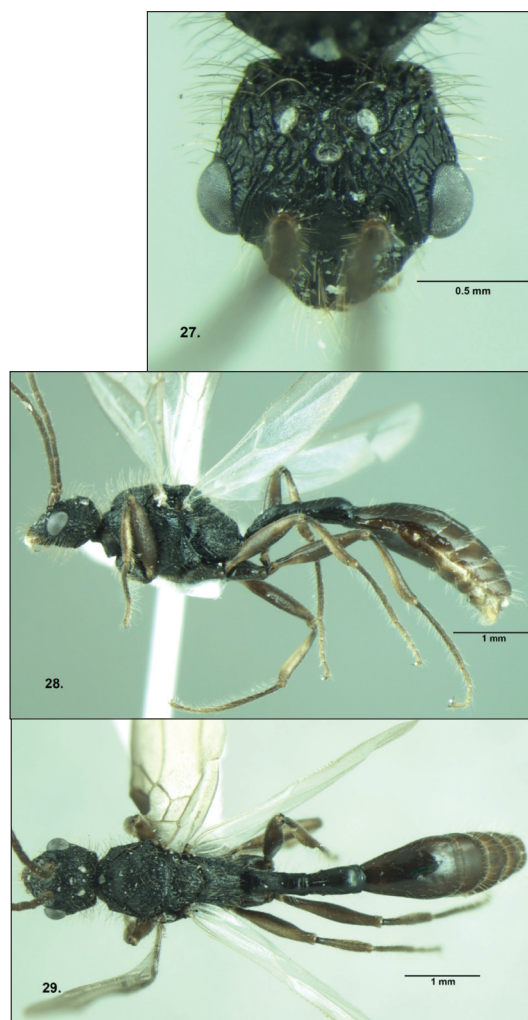


surface; head, legs and interrugal spaces opaque; tibiae finely punctured; in the case of *D. karnyi*, the clypeus has only delicate carinae and its anterior border is only feebly emarginate; the propodeum with basal part longer than its declivitous face; the head, legs and interrugal spaces shiny and tibiae finely reticulate.

DISTRIBUTION AND HABITAT. It is known by a single record from Ulu Gombak, Malay Peninsula, Malaysia. The area is covered with secondary forest and the topography is rough, mostly steep hillsides.



Figs. 27 – 29. *Dilobocondyla fouqueti*, Male: (27) Head in full-face view; (28) Body, lateral view; (29) Body, dorsal view.

Redescription of *Dilobocondyla fouqueti* Santschi, 1910 with male and female caste

Dilobocondyla fouqueti (Figs. 21-29)

Systematics

Dilobocondyla fouqueti Santschi, 1910: 283 (w.) Vietnam. Senior synonym of *lighti*: Wang & Wu, 1992: 562.

MATERIAL EXAMINED

Worker, 07.vii.1993, Shing Mun, West-Central New Territories, Hong Kong, 220 m, coll. J.R. Fellowes; 1(w), 03.x.1996, Mau Ping San Uk, East-Central New Territories, Hong Kong, 230 m, Pitfall trap, coll. J.R. Fellowes; 1(w), 2(q) and 1(m), 14.xi.1996, Tit Kim Hang West, East-Central New Territories, Hong Kong, 60 m, coll. J.R. Fellowes; 1(w), 22.xi.1996, She Shan, West-Central New Territories, Hong Kong, 50 m, coll. J.R. Fellowes; KFBG.

WORKER

Dimensions:

HL 1.30-1.51; HW 1.33-1.51; ED 0.30-0.33; SL 0.80-0.95; MFC 0.62-0.73; PRNW 0.95-1.11; ML 1.90-2.37; PTL 0.68-0.79; PTW 0.28-0.37; PTH 0.31-0.37; PPTL 0.51-0.62; PPTW 0.40-0.50; PPTH 0.37-0.47; GL 1.44-1.75; CI 100.00-102.31; SI 60.15-63.70; PTWI 41.18-46.83; PPTWI 77.42-80.65; TL 5.83-7.04 (4 measured)

Head as long as broad, slightly broader posteriorly than in front, sides barely convex, posterior head margin with broad emargination; posterior corners blunt; mandibles with 6 teeth, masticatory margin of mandibles with large apical, preapical and basal tooth; clypeus flat, anterior border emarginate with a clear notch in the middle, sinuate at the corners; frontal area indistinct; antennae slender, 12-segmented with distinct 3-segmented club; scape slender, curved at the base, reaching up to 3/4 of head length; eyes large, placed at midlength of the head; mesosoma not broader than head; promesonotal dorsum weakly convex, pro-mesonotal suture indistinct; pronotum broader than long, its anterior lateral angles acute; metanotal groove