

except that the erect hairs on mesonotum are more numerous, and in addition, there are hairs on the scutellum.

Shining black; mandibles, funiculi, tarsi, and articulations of the appendages lighter. Gaster with pale posterior border to each segment.

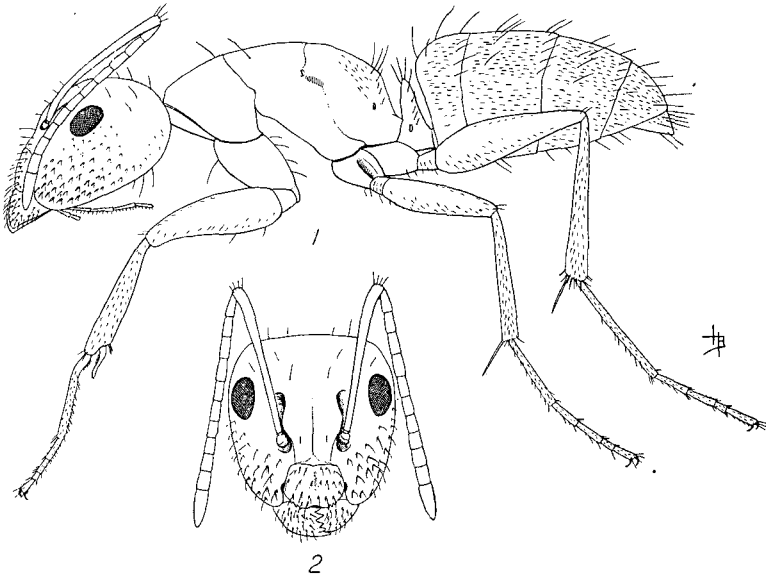
Redescribed from 5 co-types bearing Fitch numbers 5251, 5262, 5263, 5264, and 5965.

*Type locality*.—Salem, Washington County, New York.

*Host*.—*Hicoria cordiformis* (Wangenheim) and probably other species of *Hicoria*.

Fitch gives the following lengths for the various castes of this ant: Worker, 5 to 8 mm.; female, almost 12.5 mm. to tip of wings; and male (wings not included), 7.5 mm.

Although this ant resembles *nearcticus* in size, form, and color, it is clearly distinguished from that species by the nature of the pilosity and sculpturing on the anterior part of the head.



EXPLANATION OF TEXT FIGURES.

Fig. 1. Media worker of *Camponotus (Myrmentoma) caryae* (Fitch), lateral view; Fig. 2, head.

Drawn by H. B. Bradford.