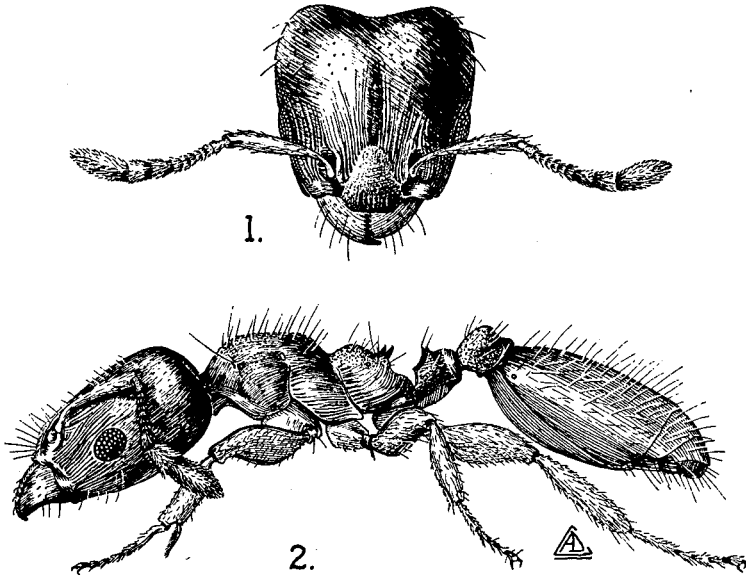


with a tooth. Post-petiole slightly broader than long, also broader than the petiole. Gaster truncate basally, with distinct humeral angles.

*Genotype*.—*Acalama donisthorpei*, new species.

*Acalama donisthorpei*, new species

(Figs. 1, 2.)



Worker of *Acalama donisthorpei*, new species. Fig. 1, frontal view of head. Fig. 2, body in profile. (Illustrations by Arthur D. Cushman.)

WORKER.—Length 2.2 mm. (holotype).

Mandibles with rather coarse, scattered, piligerous punctures. Clypeus with a few, fine, longitudinal rugulae interspersed with minute punctulations. Cheeks and much of the front of the head with numerous, fine, longitudinal rugulae, which in some lights, at least, give these regions a subopaque appearance. Posterior part of head with scattered but distinct punctures. Dorsal surface of epinotum punctulate, also with very fine, indistinct, longitudinal rugulae. Posterior part of head, legs, and gaster more shining than the remainder of body.

Hairs yellowish or grayish according to the light, simple, moderately abundant, variable in length, apparently longest and most abundant on gaster.

Body brown, gaster darker.

*Type locality*.—Sikkim, Province of Assam, India.