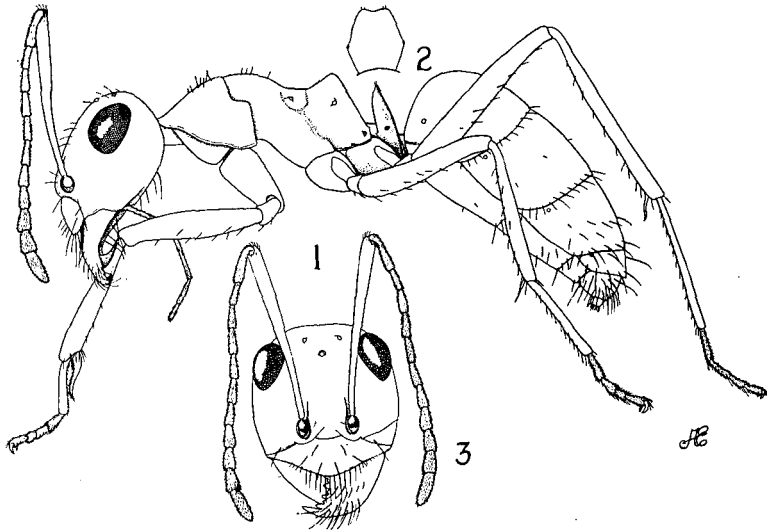


lower surface of mandible with long hairs. Thorax almost destitute of erect hairs except for a small number (usually about six) on the pronotum and a smaller number on the mesonotum. Petiole also practically devoid of hairs, occasionally an erect hair or two on the superior border. Coxa with erect hairs; erect hairs also on the flexor surfaces of the femur, tibia and tarsus. Posterior border of each of the gastric segments with a row of hairs; also a number of short, sparse, erect hairs elsewhere on the gastric segments; apex and ventral surface of gaster with longer and more numerous hairs. Pubescence sparse, fine, closely appressed, not obscuring the ground surface, thickest and most apparent of the gaster.

Body usually subopaque in general appearance, but in some lights certain parts are shining, this being especially true of the dorsal surface of the head. Color a sordid light or yellowish brown with the thorax and antennae lighter than the head and gaster.



(Figs. 1, 2, 3)

*Myrmecocystus pyramicus*, new species. Fig. 1. Profile of worker. Fig. 2. Posterior view of petiole. Fig. 3. Anterior view of head. (Illustrations by Miss Addie Egbert.)