

Ponera exotica, n. sp.

Holotype worker. (Fig. 1, A and B)

Slender, extremely small, 2 mm. in length. HW 0.40 mm., HL 0.50 mm., SL 0.32 mm., CI 80, SI 80, PW 0.29 mm., PNL 0.16 mm., DPW 0.23 mm., PH 0.30 mm. Head narrow, subrectangular, with weakly convex, almost subparallel sides and distinctly emarginate posterior border. Antenna remarkably short and thick; scape when fully extended lacking slightly more than its greatest width of attaining the posterior border of the head; all funicular segments except the first and last distinctly wider than long, antennal club massive, 4-segmented, approximately twice the length of the remainder of the funiculus. Eyes extremely small, almost indiscernible, and containing two ommatidia. Apex of mandible with three distinct teeth followed by a row of basal denticles too small to count or describe but which appear to be of approximately the same size. Thorax widest in the prothorax, apparently narrowest at the mesoepinotal suture, the suture more distinct in some lights than others, epinotum from above appearing compressed and with subparallel borders. In profile, dorsal surface of thorax meeting the epinotal declivity in a rounded angle. Petiolar node in profile, thick, subrectangular, but narrowed somewhat toward the summit of the node; from above the outline of the petiolar node about equal to or not greater than half a circle.

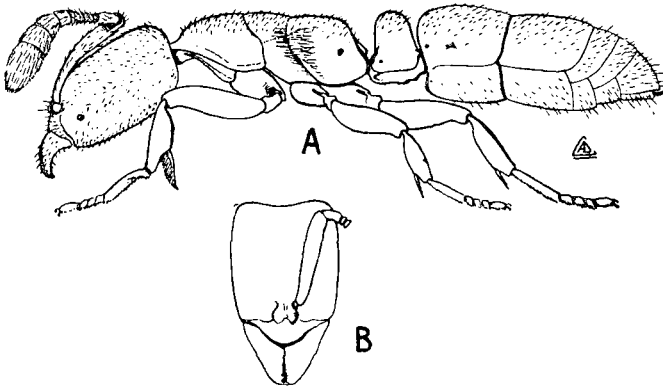


Fig. 1. *Ponera exotica*, n. sp.

- A. Profile view of body of worker.
B. Frontal view of head of worker.

Mandible smooth, shiny, remainder of body finely punctulate, the head appearing to be the finest and most densely punctulate of the body sections. The body subopaque to shiny according to certain lights or positions in which the body is held.

Body hairs extremely short, longest and most noticeable on the dorsal and ventral surfaces of the anterior part of the head, the dorsum of the petiolar node, and the dorsal and ventral surfaces of the apical portion of the gaster.

Body a rather uniform light brown or brown depending upon the light, the appendages scarcely paler.