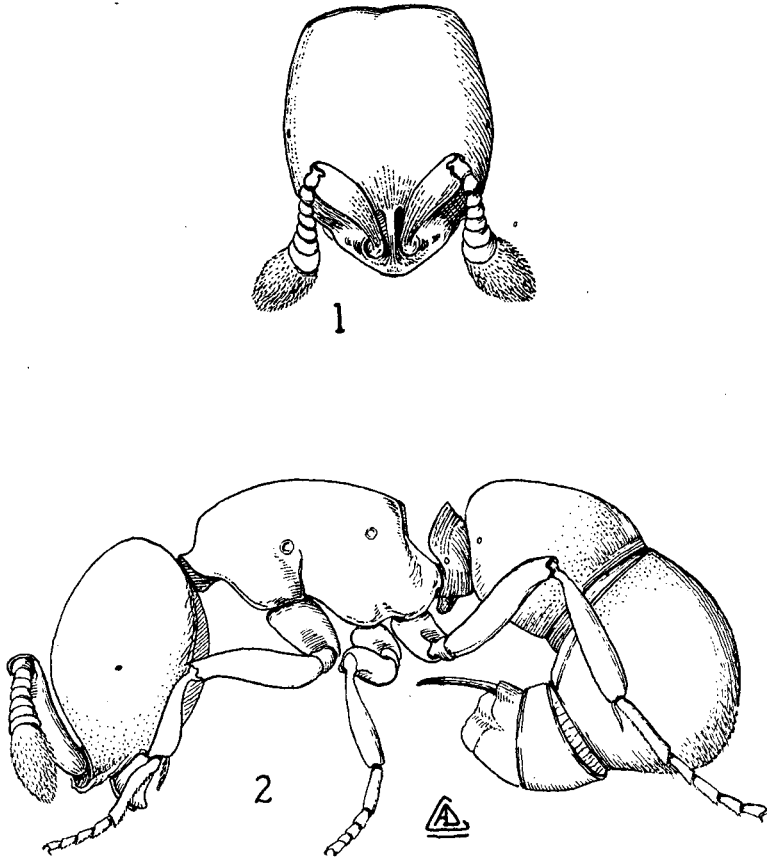


the apex of the gaster; body unusually small (less than 2 mm.) and with a dull opaque or subopaque cast.

The North American female is very similar to the worker except for her larger size, possession of wings (when a virgin), and modifications of the head and thorax such as ocelli, compound eyes, and the



Worker of *Discothyrea testacea* Roger. Fig. 1, anterior view of head. Fig. 2, lateral view of body (illustrations by Arthur D. Cushman).

extra sclerites of the thorax. We have not seen a *Discothyrea* male, but a male of *oculata*, an African species, is known to have a 13-segmented antenna with a short scape, which is approximately as long