

(3) Viewed from above, posterolateral corners of both propodeum and petiole less strongly angled, and the posterior border of node less deeply concave.

(4) Projection on posterodorsal corner of mesepisternum more convex.

(5) Sculpturation: Head shagreened just as in *scabra*, clypeus and mandible also as in *scabra*. Antennal scape closely and finely punctate, but not reticulately sculptured as is in *scabra*. Pronotum closely punctured, but the punctures separated each other by the distance of more than half of the diameter (in *scabra*, shagreened more or less like as on head). Mesonotum and anterior $\frac{2}{3}$ of propodeal dorsum punctate somewhat likewise on pronotum, and on posterior $\frac{1}{3}$ of propodeal dorsum the punctures becoming shallow and sparse (in *scabra*, mesonotum and entire propodeal dorsum closely punctate, partially the punctures more or less arranged longitudinally). Sculptures on lateral surface of meso- and metathorax generally as in *scabra*, but a little sparser. Propodeal declivity strongly shining, upper $\frac{1}{3}$ with scattered few punctures and basal $\frac{1}{4}$ - $\frac{1}{3}$ with a few vestigial transverse striae (in *scabra*, upper $\frac{1}{3}$ of the face punctured more or less like as on propodeal dorsum). Entire mesosoma much more shining. Dorsal face of petiolar node with scattered shallow punctures and strongly shining (in *scabra* closely punctate); upper

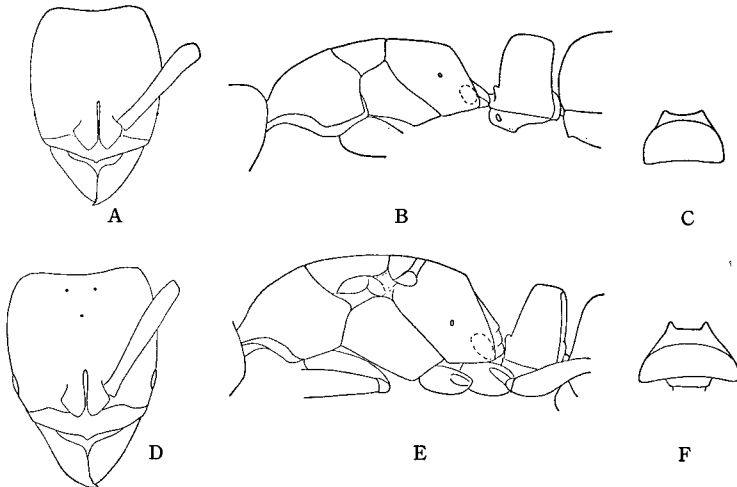


Fig. 1. *Ponera yakushimensis* sp. nov.; A. Head of worker in dorsal view. B. Mesosoma and petiole of worker in lateral view. C. Petiolar node of worker in dorsal view. D. Head of female in dorsal view. E. Mesosoma and petiole of female in lateral view. F. Petiolar node of female in dorsal view.