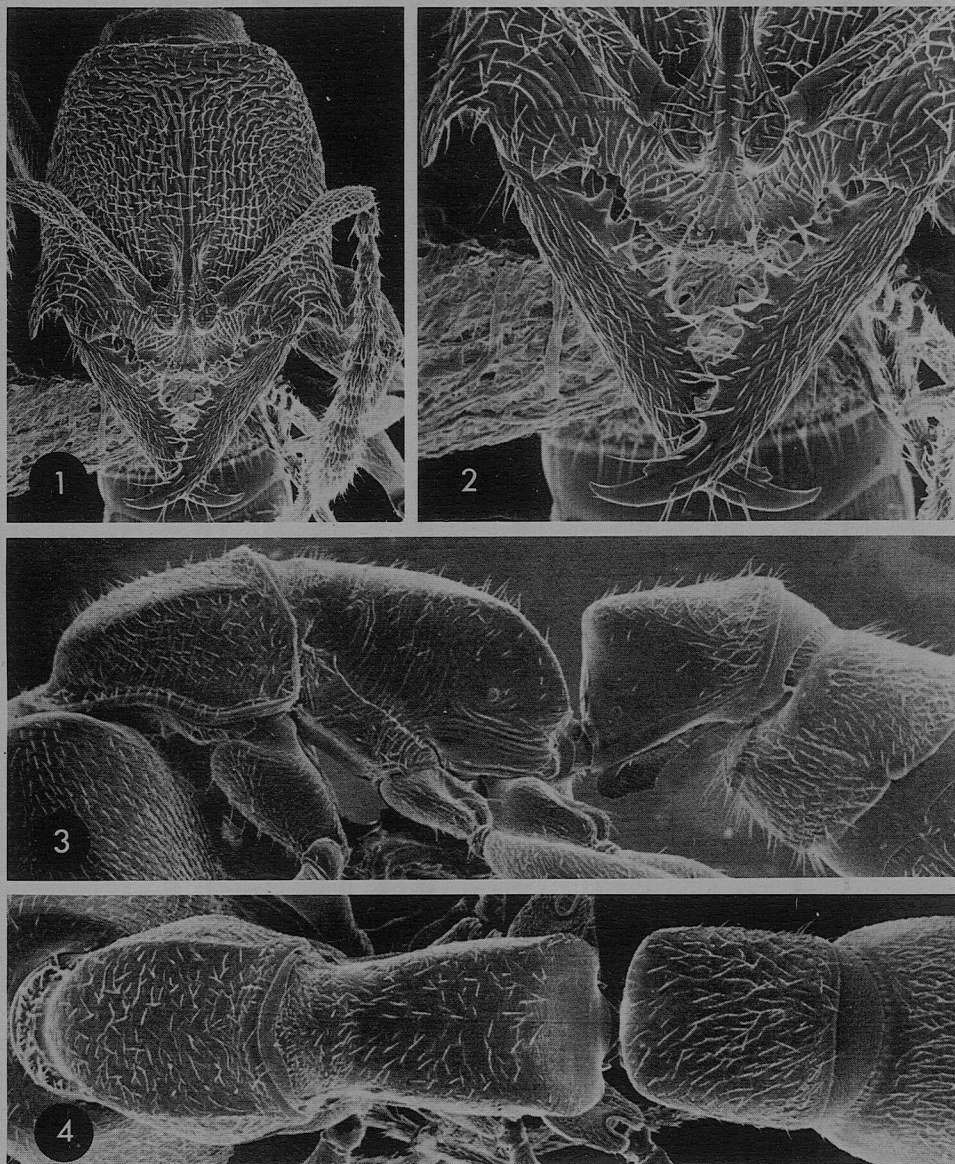


than the ventral. (6, 7) Two basal teeth, the first single, a narrow acute cone with blunt apex, its position suggesting homology with the ventral elements of the more apical paired teeth. The second basal tooth is similar to the first and clearly represents the ventral element of a pair, since it has an accompanying minute dorsal tooth at its base (Fig. 2).



Figs 1-4. *Amblyopone noonadan*, paratype worker (MCZ), standard views. HW 1.04 mm; WL 1.42 mm; petiolar node width 0.57 mm.

The only known workers of *A. noonadan* are the holotype (CM) and paratype (MCZ), which were collected together on 19 May 1962, 'in and on the ground in newly cleared rainforest', by the Danish *Noona Dan* Expedition of 1961-62.