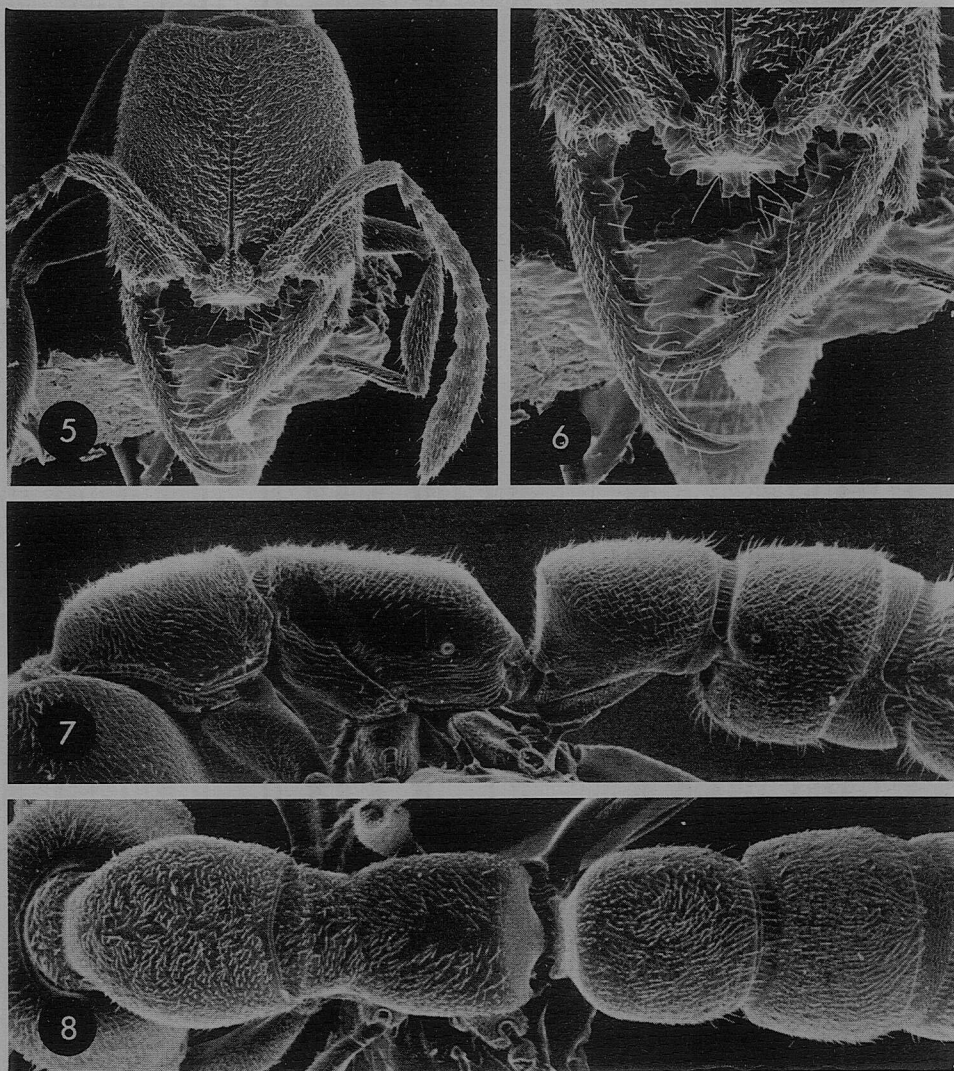


Urbani (1978), reviewing species of the European group of *A. denticulata* (Roger) (which includes *A. impressifrons*), are relevant to this discussion. However, his fig. 2, which illustrates an *impressifrons* syntype worker, does not seem to conform to the statements of couplet 1 in his key to species (p. 41). The basalmost median



Figs 5-8. *Amblyopone papuana*, holotype worker, standard views. HW 0.73 mm; WL 1.03 mm; petiolar node width 0.42 mm.

tooth is paired, though its dorsal element is somewhat reduced in size. The ANIC specimens of *impressifrons* agree with the Baroni Urbani figure in their dental configuration, and thus have five sets of paired teeth.

Of further interest are several representatives of the Oriental species-group of *A. reclinata* Mayr present in the ANIC. The apical mandibular structure in these strongly suggests that the reclinate subapical tooth of the above species, and most