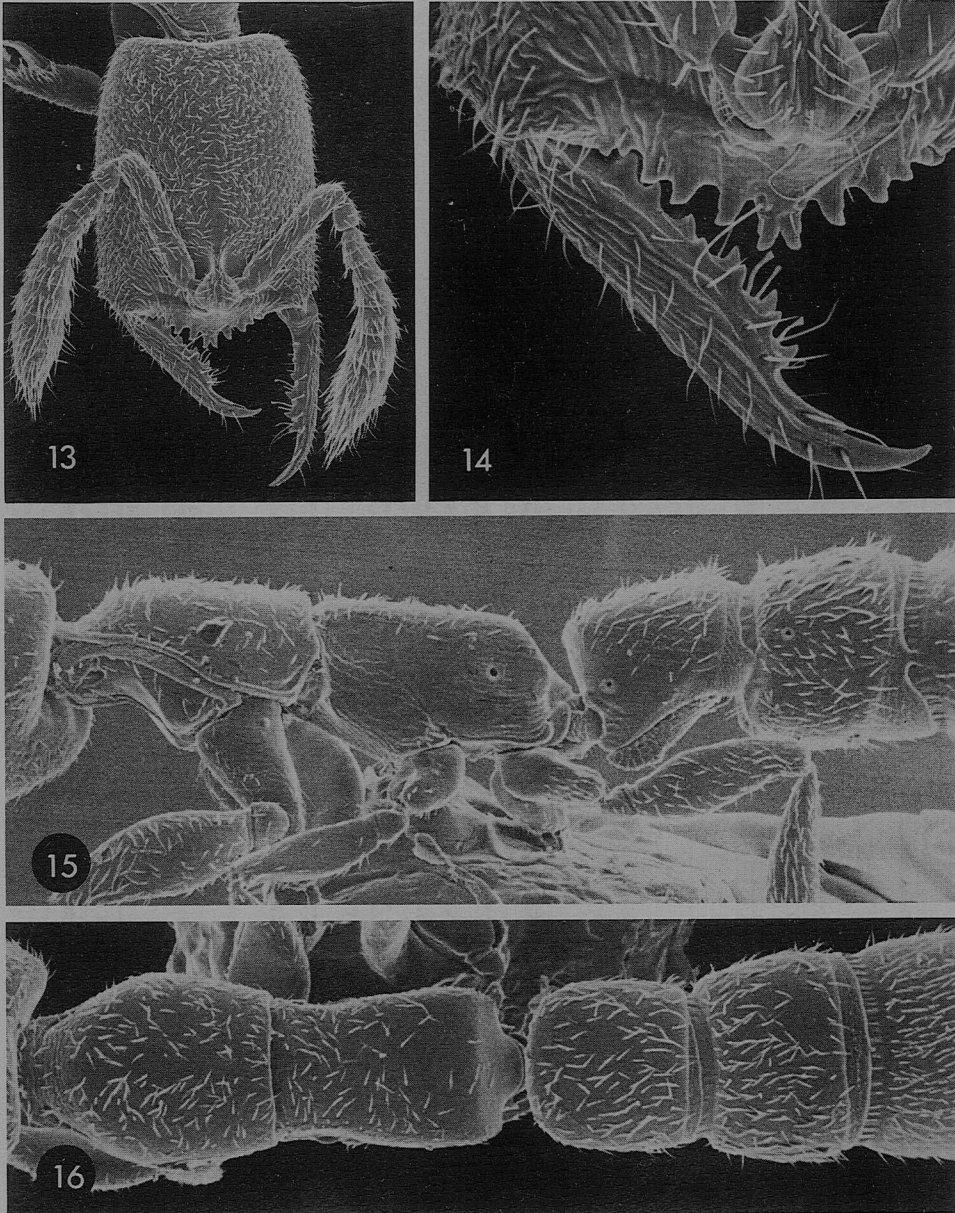


*A. gnoma* cont'd  
from p. 829



Figs 13-16. *Amblyopone gnoma*, holotype worker, standard views. HW 0.29 mm; WL 0.46 mm; petiolar node width 0.18 mm.

#### Female Diagnosis

*Dimensions.* (Smallest paratype (acc. 22,662), largest paratype (acc. 11,640): TL c. 2.0, 2.2; HL 0.43, 0.45; HW 0.32, 0.34; SL 0.22, 0.23; ML 0.25, 0.27; PW 0.25, 0.26; WL 0.60, 0.61; dorsal petiolar length 0.19, 0.20; petiolar node width 0.20, 0.21; dorsal postpetiolar length 0.16, 0.17; postpetiolar width 0.26, 0.27.

General features consistent with those of workers. Antennae bilaterally 10-jointed. Compound eyes, well developed, 0.07-0.09 mm in diameter, with about