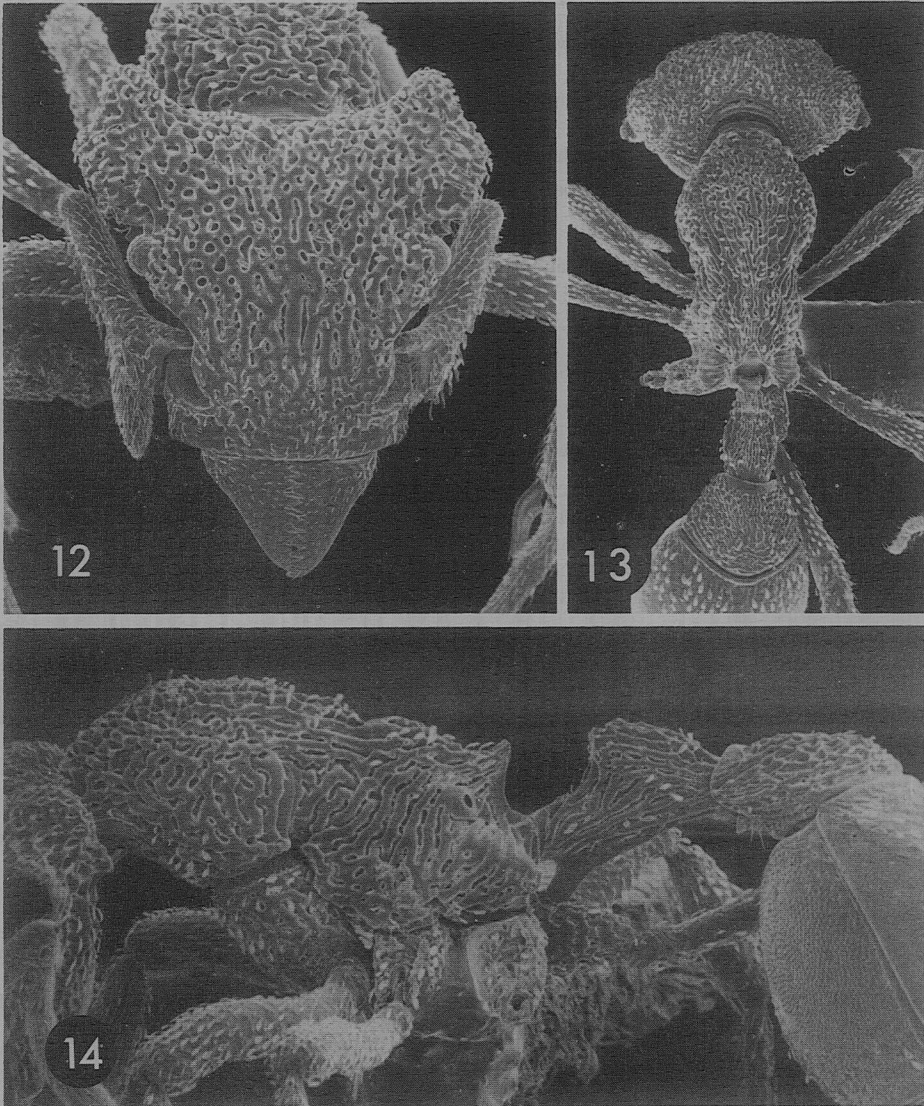


Anterodorsal and dorsolateral areas of pronotum coarsely and deeply rugoreticulate, lower part of anterior face transversely costulate, like posterior part of head, the costae extending to the ventrolateral areas of the sclerite. Mesosomal dorsum otherwise longitudinally costulate; mes- and metepisterna and sides of propodeum with diagonal costae sloping forwards; declivitous face of propodeum finely shagreened. Other sculptural details as in accompanying Figs.

Specialised hairs additional to those of scapes and the three terminal gastral segments less strongly differentiated than in other species, two to three times longer than those of ground pilosity, barely thicker; three pairs on head and two on promesonotum, deployed as in Figs 7 and 8; all are visible in profile in these and Fig. 9, except those adjacent to eyes, which are visible in Fig. 10. First gastral tergite with about 10 erect specialised hairs arranged in two loose longitudinal rows.

Female

The *emeryi* holotype alate female is matched closely by Mann's *elegans* syntype female from Nadarivatu. Both these specimens resemble workers from the *E. elegans* type-series, and those from Nandrau and Navai, in those features which distinguish them from the *E. insidiatrix* worker types.



FIGS 12-14—*Eurhopalothrix insidiatrix* sp.n., holotype worker, standard views. HW 1.40 mm, PW 0.84 mm, WL 1.61 mm.