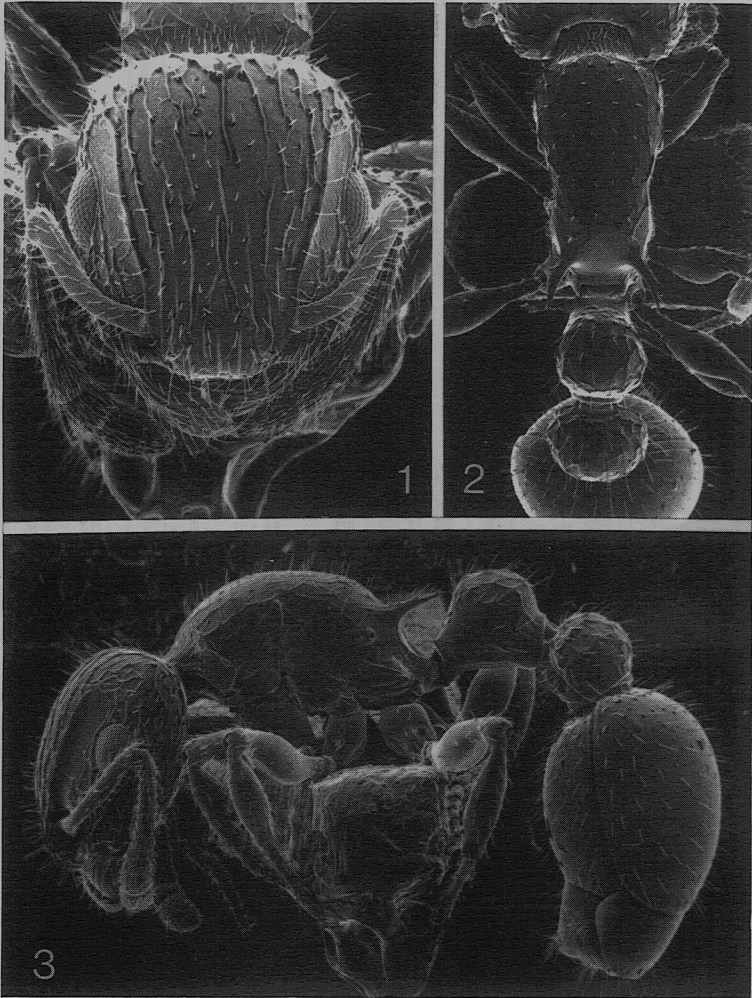


ter basally emarginate in dorsal view; sting as in *Romblonella*, blade-like, and lacking an apical appendage.

The unique holotypes of these rare species have not been dissected, but they appear on detailed inspection to have a 5:3 palpal formula, as in *Romblonella*.



Figs. 1-3: *Romblonella heatwolei* Taylor, holotype worker: 1. head, frontal; 2. mesosoma and nodes, dorsal; 3. whole animal, lateral; see text for dimensions.