

petiole and postpetiole, the former armed ventrally; and in minor differences of sculpture and pilosity.

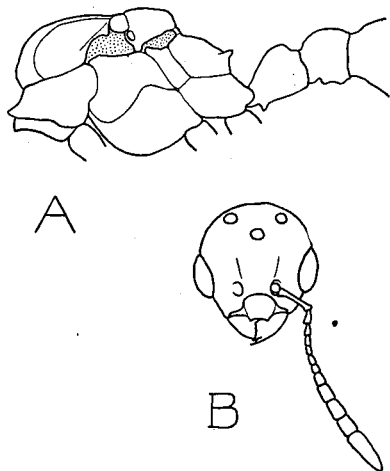


FIG. 1. A, Male of *Leptothorax duloticus* from the side; B, Head of same from the front.

SUMMARY.

1. Various observations on the behavior of *Leptothorax duloticus* are described, and, wherever possible, compared with those of *Harpagoxenus americanus*.
2. The male of *Leptothorax duloticus* is described.

LITERATURE.

- Creighton, W. S. 1927. The Slave Raids of *Harpagoxenus americanus*. *Psyche*, vol. 34, pp. 11-29 (description of male, p. 28).
1929. Further Notes on the Habits of *Harpagoxenus americanus*. *Psyche*, vol. 36, pp. 48-50.
- Sturtevant, A. H. 1927. The Social Parasitism of the Ant *Harpagoxenus americanus*. *Psyche*, vol. 34, pp. 1-9.
- Wesson, L. G., Jr. 1937. A Slavemaking Leptothorax. *Ent. News*, vol. 48, pp. 125-129.
1939. Contributions to the Natural History of *Harpagoxenus americanus*. *Transactions Amer. Ent. Soc.* vol. 65, pp. 97-122.