

Eyes large, diameter equal to one-third the length of head, prominent, hairy, hemispherical, situated very far forward. Ocelli oval, almost on the vertex.

Antennæ thirteen-jointed, half as long as the body; flattened; inserted on the anterior margin of the head;

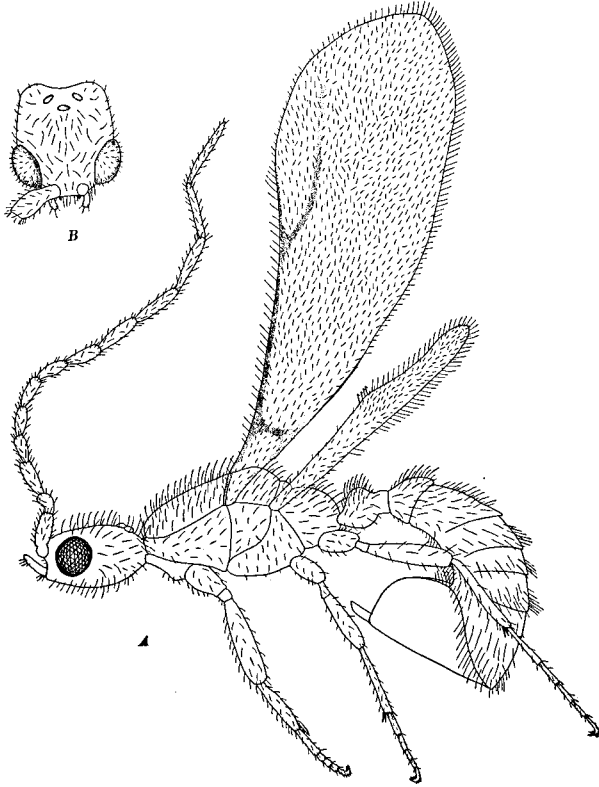


Fig. 1. A. *Phaulomyrma javana*, lateral view ♂. B. *Phaulomyrma javana*, front view of head.

twice as far apart as the distance from the eyes. First segment thickest, one-third as wide as long; second, one-half the length of the first, curved and thickened apically; third, as long as the first; fourth to the thirteenth gradu-