

Volsellæ thin, plate-like, with broadly rounded free margins. The prongs of the bifurcated subgenital lamina slender, one-fourth as long as the genitalia.

Described from two males from Buitenzorg, Java (III-'07), collected by F. Muir. (Ex. coll. W. M. Wheeler.)

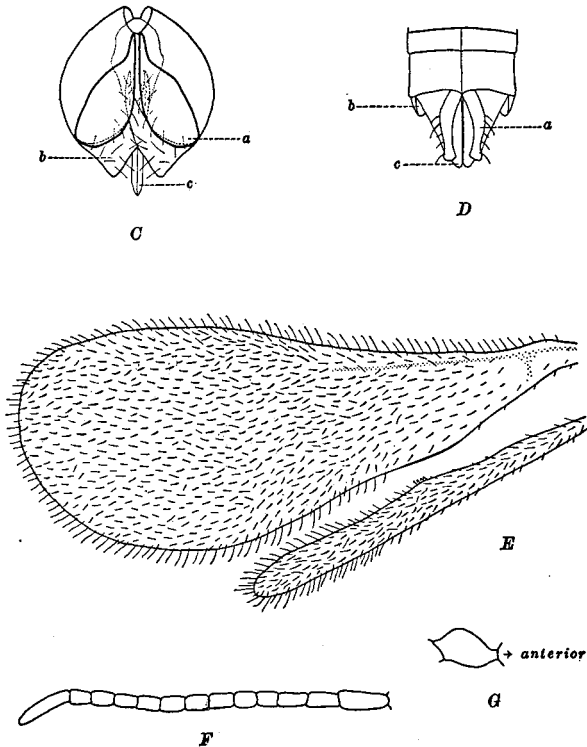


Fig. 2. C. *Phaulomyrma javana*, ventral view of male genitalia. a, Volsellæ; b, Stipites; c, Sagittæ. D. *Leptanilla santschii*, ventral view of male genitalia. E. *Leptanilla santschii*, wings. F. *Leptanilla santschii*, antenna. G. *Leptanilla santschii*, right lateral view of petiole.