

microlarvae interspersed among them; larger (non-minor) larvae and pupae were often clumped together but not clearly separated from the minor brood.”

LARVAL CLASSIFICATION vs. ADULT CLASSIFICATION (p. 696). — Francoeur and Loiselle (1988:68): — “G.C. and J. Wheeler (1955; 1976) characterized the *Nesomyrmex* larvae as pogonomymecoid like those of *Leptothorax* (s.s.). They are either pheidoloid or crematogastroid in the other subgenera of *Leptothorax* (s. 1.). These differences offer unused clues to clarify generic limits and establish higher taxonomic units.”

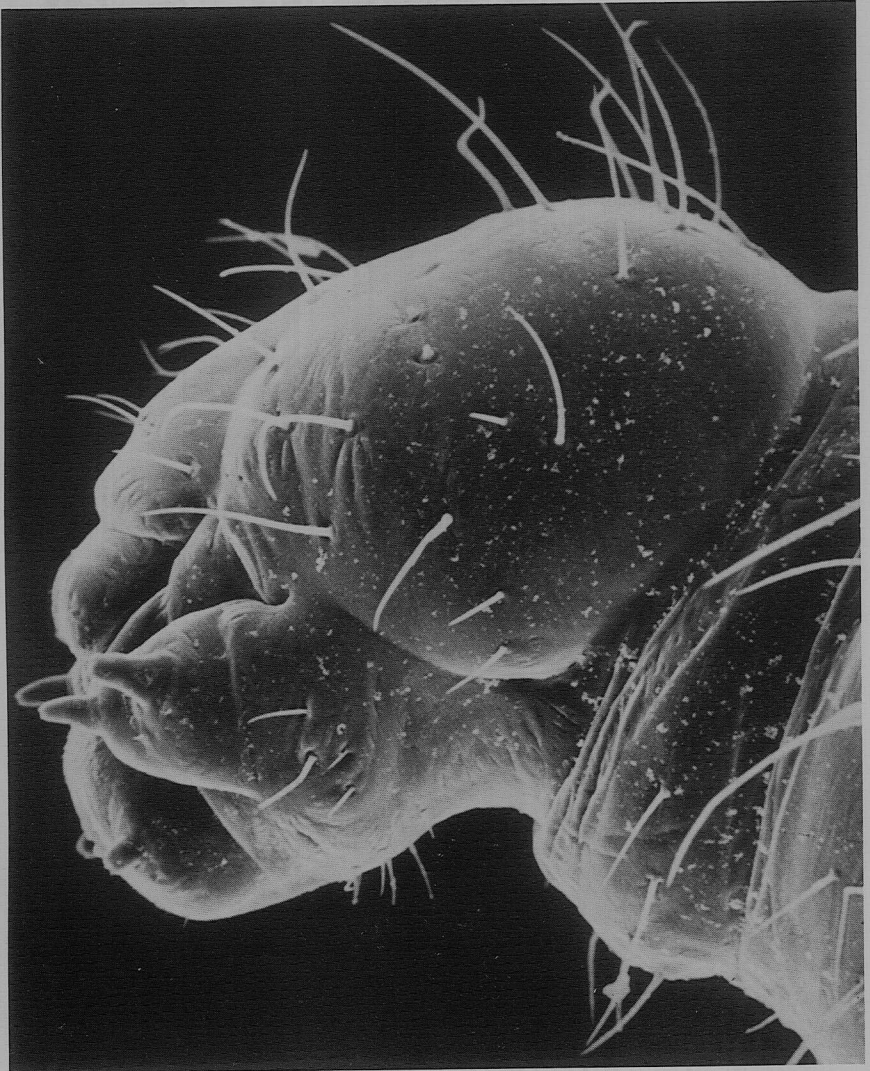


FIGURE 11. *Pogonomyrmex badius*. Head in side view, X214. Photomicrograph, courtesy of Diana E. Wheeler.