

Hairs yellow, rather short and sparse, suberect on the antennal scapes and legs as well as on the upper surface of the body.

Deep reddish brown; mandibles red, broadly bordered with black; clypeus and anterior border of the head black, the former reddish in the middle; posterior edges of gastric segments yellowish; legs and antennæ light, clear yellow.

*Worker.* — Length, 2.5 mm.

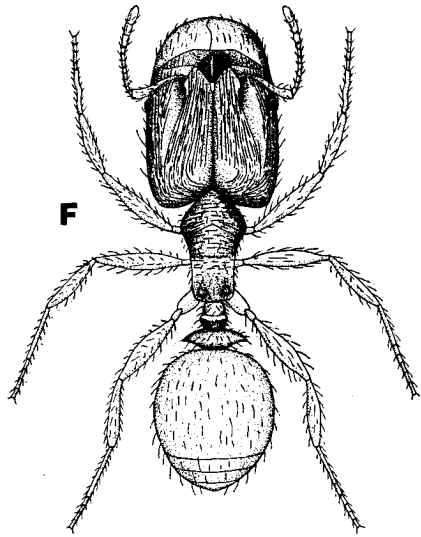
Head somewhat longer than broad, sides subparallel, posterior corners rounded. Eyes near the middle of the lateral surfaces. Mandibles, 6-7-toothed. Clypeus short, with very broadly rounded, entire and depressed anterior border, convex behind in front of the triangular frontal area, and with a faint longitudinal carina. Antennæ like those of the soldier, but straighter, and extending for about one third of their length beyond the posterior corners of the head. Thorax rather long and slender; promesonotal region evenly convex in profile, without lateral tubercles; epinotum and spines as in the soldier. Petiole fully three times as long as broad, hardly wider behind than in front, with subparallel sides; node not excised in the middle, in profile much lower and more rounded than in the soldier. Postpetiole campanulate, about as long as broad. Legs rather long and slender.

Mandibles, clypeus, and frontal area shining, the first with sparse, piligerous punctures. Head and thorax subopaque, the former reticulate, with a few irregular longitudinal rugæ, especially on the front and cheeks; vertex rather smooth. Thorax with coarse, transverse rugæ, becoming longitudinal on the pleuræ, especially in the region of the epinotum. Petiole, postpetiole, and gaster smooth and shining.

Hairs yellow, erect, abundant, and rather long, conspicuous on the legs and antennal scapes as well as on the upper surface of the body.

Dark brown; postpetiole, gaster, and antennæ somewhat paler; legs yellow.

Described from one soldier and two workers taken on Fish Hawk Key at the west end of the Southern Bight, Andros Island.



*Pheidole androsana* sp. nov. Soldier.

The soldier of this species is related to *Ph. guilelmi-muelleri*, but differs in having pronounced transverse rugæ on the occiput, and in lacking the transverse groove and ridge on the pronotum. The thorax of the new species is also longer and more slender, and the hairs are much less abundant than in Forel's species. The worker is much darker and has very different sculpture. *Ph. androsana* seems