

Workers and soldiers from several colonies were found in rotten palmetto boles or under stones in vegetable mould on the keys about the west end of the Southern Bight, Andros Island, and near the Blue Hills, New Providence Island.

25. *Cremastogaster ashmeadi* Mayr. — Two workers, nearly black in color, with dark red antennal funiculi and tarsi, were taken on a key in Crawl Creek, western Andros. They may represent a distinct variety, but this cannot be determined without more material. The typical form is common on the eastern coast of Florida (Miami and Card's Point) and the adjacent keys (Key Largo, etc.), where it may be found attending aphides and Coccidæ on the mangroves and other trees.

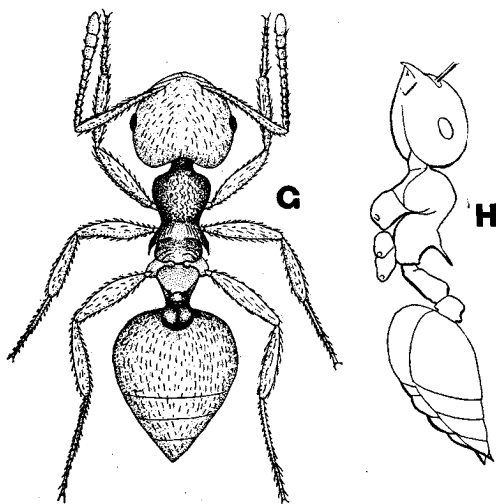
26. *Cremastogaster lucayana* sp. nov.

Worker (Figs. G and H). — Length, 2.7–4 mm.

Allied to *C. lineolata* Say. Antennal scape surpassing by fully twice its greatest diameter the posterior angle of the head; club 3-jointed. Clypeus distinctly flattened in front. Frontal area rather indistinct, triangular, narrower than long. At the posterior end of the slender frontal groove there is a very distinct dimple or impression. Thorax strongly constricted in the mesoepinotal region. Epinotal spines straight or but very slightly recurved at their tips,

strongly diverging outward, upward, and backward, shorter than the distance between their bases. Petiole from above about as long as broad, in profile distinctly narrower dorsoventrally in front than behind. Postpetiole narrower than the petiole, with a deep median groove. Gaster broad, triangular, flattened above.

Mandibles, clypeus, cheeks, and front finely but sharply and longitudinally striated, opaque; vertex somewhat smoother and more shining, with distinct transverse rugæ in the occipital region. Thorax opaque; pro- and mesonotum and base of epinotum very coarsely and vermiculately



*Cremastogaster lucayana* sp. nov. Worker; G, dorsal; H, lateral aspect.

rugose, the rugæ being more longitudinal on the base of the epinotum and on the pleuræ. Epinotal declivity, petiole, postpetiole, and gaster smooth and shining.