

50. *Prenolepis* sp. — A few workers of a small, black, thickset species of *Prenolepis*, from a key in the Southern Bight, Andros Island, represent some form which is certainly not *steinheili* Forel or any described subspecies of *fulva* or *guatemalensis*. As I have no males I refrain from describing the specimens as a new species.

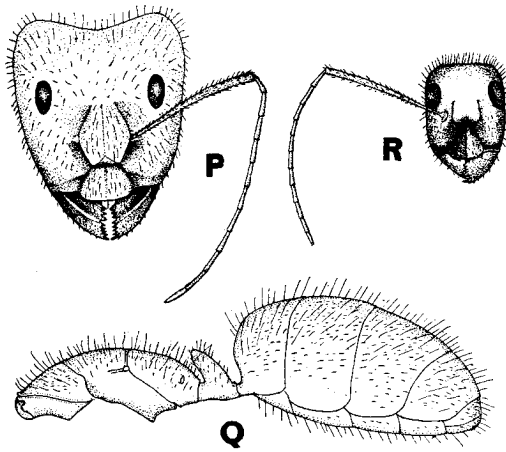
51. *Camponotus maculatus* Fabr. subsp. *lucayanus* subsp. nov.

Worker major (Figs. P and Q). — Length 10–12 mm.

Head large, narrowed in front, posterior corners prominent, occipital border concave. Clypeus rather indistinctly keeled, its anterior lobe broad, with

rounded corners and straight median border. Mandibles 8–9-toothed. Antennal scapes slender, not compressed at the base. Thorax narrow, pronotum about half as broad as the head; in profile much lower than in forms like subsp. *maccooki*, *vicinus*, etc.; evenly rounded; epinotum very flat, barely angular, basal surface nearly twice as long as the declivity. Hind femora without bristles on their flexor surfaces.

Mandibles glabrous, coarsely punctate. Head, thorax, and gaster subopaque, shagreened. Clypeus and cheeks with coarse and rather shallow elongate punctures or foveolæ; remainder



Camponotus maculatus Fabr. subsp. *lucayanus* subsp. nov.
P, head of worker major; Q, same from side; R, head of worker minor.

of the head more opaque, with smaller scattered punctures, except between the frontal carinæ, where they are of the same size as on the cheeks. Antennal scapes punctate. Thorax and gaster somewhat shining.

Hairs abundant, yellow, erect, conspicuous on the cheeks, posterior portions of the head, front, antennal scapes, legs, thorax, petiole, and gaster. Pubescence on the prothorax and gaster yellow, long, sparse, and appressed; shorter and much denser on the antennal funiculi.

Ferruginous red. Mandibles, antennal scapes, upper surface of head and thorax, darker; gaster dark brown, almost black, with yellow posterior edges to the segments. Legs reddish yellow, tarsi and funiculi somewhat darker. Mandibular teeth, anterior border of clypeus, anterior corners of head, a cloud on the front, and external to each antennal insertion, black. In some specimens the whole thoracic dorsum is ferruginous red.

Worker media. — Length 7–9 mm.

Closely resembling the soldier except in the smaller size of the head, which