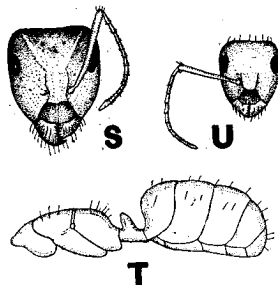


towards the apex. Clypeus sharply carinate, produced into a broad lobe in front which is rounded on the sides and very faintly sinuate in the middle. Eyes large, flat, broadly elliptical, behind the middle of the head. Vertex with three small impressions simulating ocelli. Antennæ rather robust, scape not compressed at the base, enlarging towards the tip, which surpasses by a little more than its transverse diameter the posterior corner of the head. Thorax rather robust, prothorax three fifths as broad as the head, meso- and meta-thorax laterally compressed; in profile the thorax is rather high, evenly arched as far back as the beginning of the epinotal declivity, which forms a very blunt angle with the basal epinotal surface and is of about the same length. Petiole convex in front and flattened behind, with a rather sharp border which is hardly excised in the middle. Gaster and legs of the usual shape.



*Camponotus inaequalis* Roger var. *ramulorum* var. nov. S, head of worker major; T, body of same from side; U, head of worker minor.

Body shining, very finely shagreened. Mandibles, clypeus, and anterior two thirds of the head sparsely punctate.

Hairs yellow, very sparse, erect, absent on the legs and antennæ, except at the tips of the scapes and femora. Each gastric segment has a single row of hairs along its posterior edge.

Yellow; mandibles reddish brown with black teeth. Head dark brown or black, especially on its upper surface, posterior corners yellow; the black portion extending back beyond the vertex in the form of a blunt point. Pronotum in the middle with a large dark brown or black triangular spot, broadest behind, sides with dark brown clouds; meso- and epinotum and pleuræ spotted with black or brown. Gaster with a broad dark brown band across each segment; on the second and third segments this band suddenly narrows on either side. Petiole and legs yellow; tarsi and antennæ reddish.

*Worker minor* (Fig. U). — Length 5–6 mm.

Head, excluding the mandibles,  $1\frac{1}{2}$  times as long as broad, with slightly rounded sides, not narrower in front than behind; posterior margin straight. Mandibles 6-toothed. Clypeus and eyes like those of the worker major. Antennal scape projecting about  $\frac{1}{3}$  its length beyond the posterior corner of the head. Thorax very similar to that of the worker major; in front somewhat narrower than the head. Petiole narrower, more obtuse, and seen from behind with a more convex border than in the worker major.

Sculpture and pilosity as in the worker major. The head and thorax in some specimens are uniformly yellow or have only a few pale brown clouds on their dorsal surfaces. The brown bands on the gaster are paler and narrower than in the worker major.

*Female*. — Length 12–13 mm.

Resembling the worker major. The head is narrower and the antennal scapes project somewhat further beyond the posterior corners. Epinotum rounded, with short basal and abrupt and longer declivity. Node of petiole broad, rather blunt, with a transverse, faintly sinuate upper border.