

Mexico: Guanajuato (Dugés), City of Mexico (Flohr), Matamoras (Langstroth), El Moral, Ciudad Porfirio Diaz (seven repletes from S. F. Rangel); Chilicote, Chihuahua (three ordinary workers from C. H. Tyler Townsend).

Texas: (Forel); Brownsville (Langstroth), El Paso (one worker, Am. Mus. Nat. Hist. Coll.).

The repletes from El Moral agree very closely with Forel's description. I am not so certain that the other specimens belong to the typical *melliger*. This form is distinguished from *mexicanus* by its small and more mesially

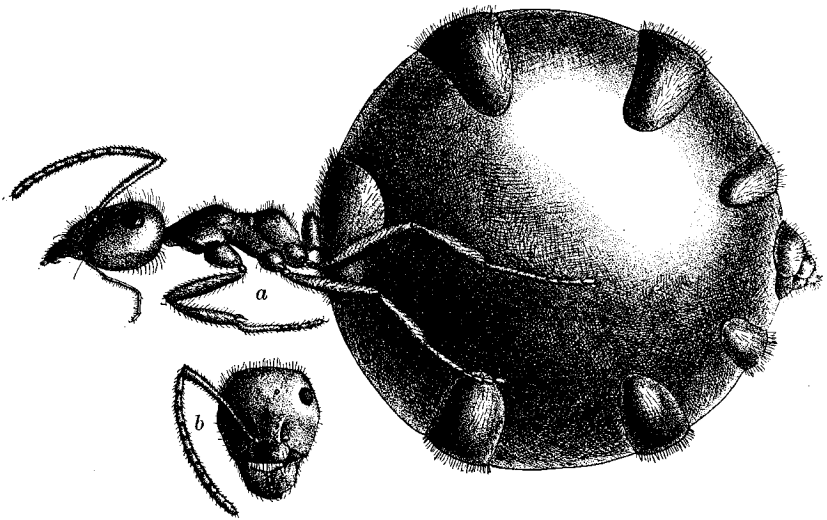


Fig. 2. *Myrmecocystus melliger* Forel, a, replete; b, head of same from above $\times 8$.

placed eyes, broader head in the worker major and darker color. Unfortunately both the female and male are unknown.

2. *Myrmecocystus melliger orbiceps* subsp. nov.

(Fig. 3.)

WHEELER, Biol. Bull., XIII, 4, 1907, p. 200, fig. 11, ♀.

Worker major. Length 7-8 mm.

Head fully as broad as long, orbicular, with much inflated and rounded cheeks. In other respects the structure of the body is like that of the typical form.

Surface finely and rather irregularly reticulate-punctate, opaque, except the head, which is shining. Mandibles coarsely longitudinally striated. Clypeus with a few scattered piligerous punctures.