

Langtry, Tex. Of six males taken from a single colony at Monahans, Tex., two have a complete discoidal cell, three have no trace of it and in one it is incomplete. The coloration of the workers is somewhat variable, but what I regard as the typical form of the subspecies has the head, thorax, petiole, legs and antennæ of a uniform deep red color and the gaster black and shining and without a silvery gray luster. Such individuals closely resemble certain forms of *Formica*, especially *F. fusca perpilosa* Wheeler and *F. nitidiventris* Emery.

6. *Myrmecocystus melliger mimicus* var. *jesuita* var. nov.

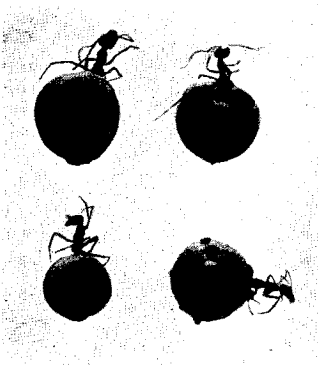


Fig. 7. *Myrmecocystus mexicanus* var. *horti-deorum* McCook. Repletes, slightly enlarged.

*Worker.* In size, sculpture and pilosity this form closely resembles the typical *mimicus*, but the thorax and posterior portion of the head are rather inconstant in coloration, varying from very dark red to black.

Ft. Davis, Texas (Wheeler).

The specimens of *mimicus* cited from Alamito and Alpine, Texas, are transitional to this variety as they have the thorax of a very deep red color.

7. *Myrmecocystus melliger mimicus* var. *depilis* Forel.

FOREL, Ann. Soc. Entom. Belg., XLV, 1901, p. 135 ♀; WHEELER, *ibid.*, p. 205.

*Worker minor.* Length 4-4.5 mm.

Shining and as dark in color as *jesuita*, but with much fewer erect hairs on the body and appendages. On the scapes the hairs are entirely or almost entirely lacking and are present only on the flexor surfaces of the tibiae.

Mexico: Pacheco, Zacatecas (Wheeler).

California: Needles, Mojave Desert (Wheeler).

A cotype of this variety from Pacheco, in my possession, has on the antennal scapes a few erect hairs but these are absent in the type described by Forel and in a single specimen from the Needles. The material, however, is insufficient, and the variety may have been based merely on rubbed specimens of what I have called *jesuita*.