

Like the larger workers except in having the gaster distended and filled with honey.

*Female.* Length 10–11 mm.

Head similar to that of the worker but as broad as long, without the mandibles. Apical tooth of mandibles very long and curved. Last joint of maxillary palpi little more than half as long as the penultimate joint, which like the third and fourth joints is broad and flat. Thorax like that of the *melliger* forms, broader than the head. Petiole in profile high, with flat anterior and posterior surfaces and rather acute border, notched in the middle. Gaster short, broadly elliptical, convex above. Legs moderately long. Wings long (12 mm.) with large discoidal cell.

Sculpture, pilosity and pubescence as in the worker. The yellow of the head, thorax and gaster is more brownish. Wings hyaline, with yellowish brown veins and stigma.

*Male.* Length 4.5–5.5 mm.

Very similar to the males of the *melliger* forms, but the mandibles have 2–3

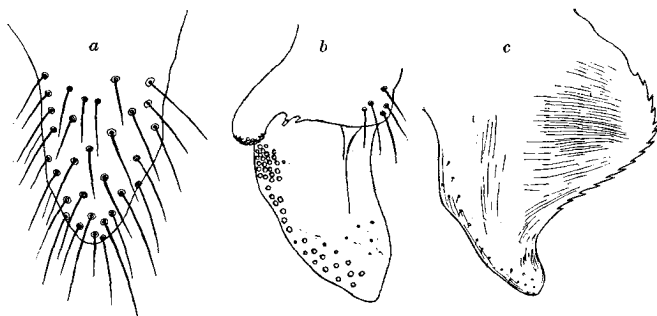


Fig. 10. *Myrmecocystus mexicanus* var. *horti-deorum*; a, outer, b, median, c, inner genital valve of male.

minute and unequal teeth in addition to the apical tooth. The discoidal cell is absent in the wing (I find it present and of abnormal triangular form in only one out of 25 specimens taken from several different colonies), and the genitalia have a different shape (Fig. 10).

Gaster shining, head and thorax more opaque, very finely punctate or shagreened.

Pilosity and pubescence similar to those of the worker but much less abundant, especially on the legs.

Pale yellow; head and gaster dark brown, thorax lighter brown, its sutures, the genitalia, mandibles, border of clypeus and antennæ whitish yellow; legs and the veins and stigma of the wings sordid yellow.

Colorado: Garden of the Gods, Manitou, Colorado City (McCook, P. J. Schmitt, Wheeler).

New Mexico: Santa Fe (Loew; Krummeck; R. Thaxter, Wheeler Exped.); Abiquiu (Cope); Pecos (T. D. A. Cockerell).

California (McCook).