

Redescribed from a number of workers and females from all of these localities except California, and from topotypes of males and females taken July 25-28, 1903 and 1906. This variety is very constant and might be regarded as a subspecies, but before elevating it to this rank, it would be desirable to have more material of the typical form from several localities in Mexico.

12. *Myrmecocystus mexicanus navajo* subsp. nov.

(Fig. 11.)

*Worker.* Length 3-4.5 mm.

Differing from the two preceding forms

in its much smaller size and in the following characters: the whole body is of a pale whitish yellow color, except the gaster which is more or less fuscous owing to the dark contents of the crop showing through the diaphanous yellow integument. The eyes are decidedly larger, being more than  $\frac{1}{3}$  as long as the side of the head. The declivity of the epinotum is longer than the base and slightly concave, the petiole is narrow, anteroposteriorly compressed, and its free border is rounded and entire. The hairs and pubescence are much sparser than in the other forms of the species. The scapes have erect hairs only on their anterior surfaces and the legs only on the flexor surfaces of the femora. In some speci-

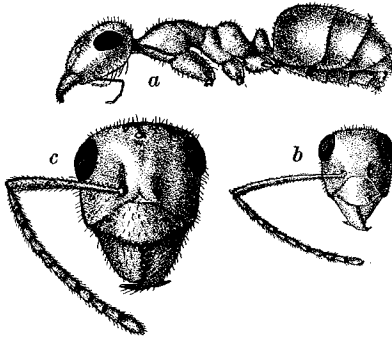


Fig. 11. *Myrmecocystus mexicanus navajo* subsp. nov., a, worker; b, head of same; c, head of female.  $\times 10$ .

mens there are also a few oblique hairs on the flexor surfaces of the tibiae. The surface of the body is uniformly shining and the pubescence is very dilute.

*Female* (deâlated). Length 9 mm.

Head narrower than in *horti-deorum*, with slightly larger eyes. Yellow color of body paler, pilosity and pubescence sparser.

This form, which is very distinct both in structure and habits is described from a large number of workers and a single female taken May 7 and 25, 1905, from several colonies in the dry deserts east of the town of Albuquerque, New Mexico.

13. *Myrmecocystus mexicanus mojave* subsp. nov.

*Worker.* Length 4.5-5 mm.

Resembling the worker of *navajo* in stature, in the shape of the head and size of