

Pubescence much as in the typical *lineolata*, but the erect hairs are sparser, the appressed hairs on the legs shorter. The hairs on the antennal scapes, however, are longer, more abundant and oblique.

Color like that of the typical *lineolata*, castaneous with black gaster, the latter sometimes paler at the base; antennæ and legs more reddish brown, with the middle portions of the femora and tibiæ and the tip of the last antennal joint piceous or blackish.

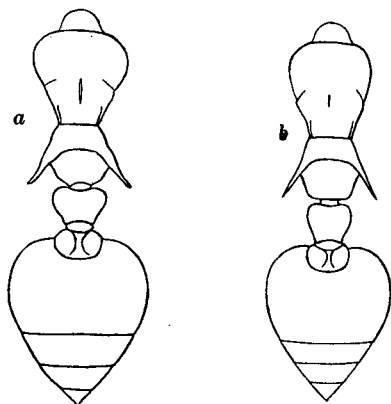


Figure 1. *a*, Thorax and abdomen of worker *Crematogaster lineolata* Say; *b*, *C. atkinsoni* sp. nov.

Some specimens have the head and thorax more blackish, with the mandibles, cheeks, clypeus, tarsi, articulations of the legs, thorax, petiole, and postpetiole reddish brown or deep red.

Described from several workers from Fort Myers, Fla. (J. W. Youngs) which may be regarded as the type-locality. I possess other specimens taken in the following localities in the same state: Titusville (Amer. Mus. Nat. Hist.); Crescent City (Van Duzee); Jacksonville (Mrs. A. T. Slosson); Paradise Key; (E. S. Snyder) and Tallahassee.

*C. atkinsoni* var. *helveola* var. nov.

*Worker*. Like the typical form of the species, except in color. Brownish yellow, legs slightly paler; posterior half of gaster and sometimes also the upper surface of the head pale brown.

*Female* (deälated). Length 6.5 mm.