

orbits; first and last funicular joints longer than broad, the remainder scarcely as long as broad. Thorax slender; pronotum distinctly longer than broad, scarcely broader in front than behind, submarginate on the sides posteriorly, with rounded humeri, in profile evenly convex above. Mesonotum circular, rather prominent, sloping to the mesoëpinal suture, which lies in a rather deep impression bearing the metathoracic spiracles. Epinotum as long as the pro- and mesonotum together, broader in front than behind, somewhat compressed laterally, the base much longer than the declivity, in profile moderately convex and passing with an even curve into the declivity. Petiole more than twice as long as broad, the short peduncle passing gradually into the low rounded node which is only about $\frac{1}{3}$ as high as the length of the segment, a little more abruptly constricted behind, the sides scarcely compressed, its ventral surface with a small tooth anteriorly. Postpetiole

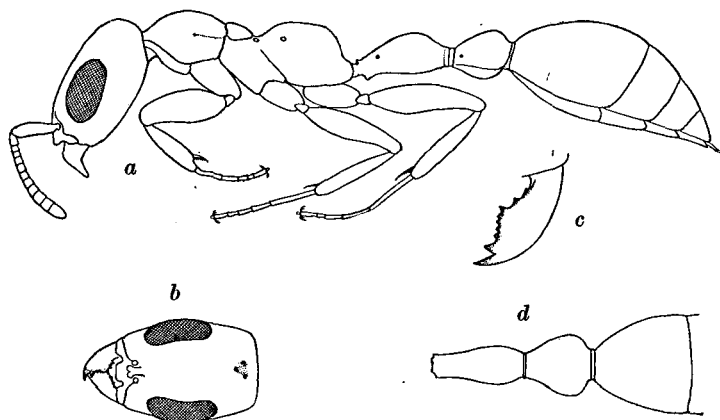


Fig. 1. *Pseudomyrma filiformis* Fabr. Worker. *a*, in profile; *b*, head from above; *c*, mandible; *d*, petiole, postpetiole and first gastric segment from above.

twice as broad as the petiole and about as broad as long, narrowed in front, subtriangular from above and laterally. Gaster rather long, first segment as long as broad. Legs moderately long, fore femora slightly swollen.

Subopaque or glossy; head more shining, especially above; mandibles striatopunctate; antennal scapes smooth and shining; body and legs very finely punctate, head and pronotum a little less densely than the remainder of the body.