

Hairs and pubescence white, the hairs short and sparse, rather uniformly distributed on the body, absent on the legs; pubescence fine, dense and hiding the sculpture on the gaster, postpetiole, petiole, epinotum and legs, so that these parts appear pruinose, more dilute on the pronotum and especially on the head.

Head and pronotum yellowish red; mandibles, antennæ and clypeus lemon yellow; remainder of body fuscous; meso- and epinotum and petiole suffused with reddish; apical margin of first gastric segment and base and apex of succeeding segments, tarsi, trochanters, tips of coxæ, bases and tips of tibiæ and femora brownish yellow. Mandibular teeth and ocellar region blackish.

Female. (Fig. 2.) Length 6.5–7 mm.

Head nearly $2\frac{1}{2}$ times as long as broad, suboblong, with broadly excised posterior border and straight, parallel sides, the eyes flat, about $\frac{1}{4}$ as long as the head, their posterior orbits slightly behind its

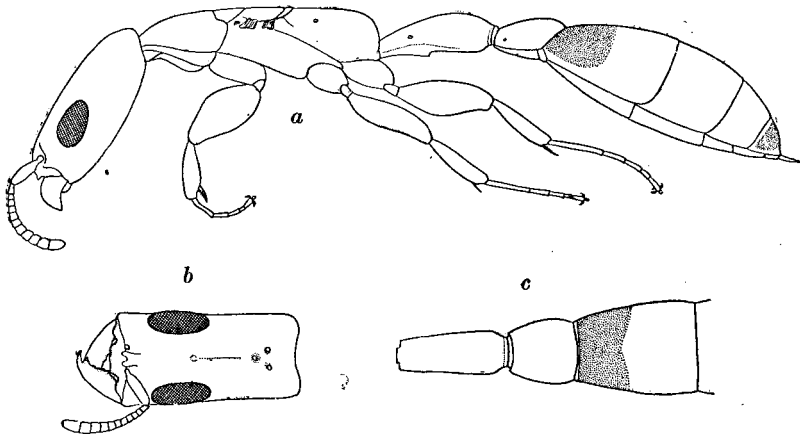


Fig. 2. *Pseudomyrma filiformis* Fabr. Female. *a*, lateral view; *b*, head and *c*, petiole, postpetiole and first gastric segment from above.

median transverse diameter. Ocelli small, only slightly larger than those of the worker. Mandibles and clypeus much as in the worker. Frontal carinæ very small and close together. Frontal groove represented by a shallow pit in the center of the head and a faint, impressed line running from it to the anterior ocellus. Antennæ shorter than in the worker, the scape scarcely reaching to the anterior orbit. Thorax very long and slender, nearly four times as long as broad, narrower than the head, the sides almost sub-