

Frontal groove distinct. Antennæ long, filiform, 12-jointed; scape short, about twice as long as broad, first funicular joint as broad as long, remaining joints cylindrical, the second distinctly longer than the third. Thorax elongate; mesonotum prominent, with distinct Mayrian furrows. Petiole and postpetiole shaped somewhat as in the worker but less convex dorsally, the former without a ventral tooth. Gaster long and narrow. Legs long and slender, the femora not dilated.

Finely punctate, but the punctures more distinct than in the female, so that the surface of the body is somewhat less smooth and shining; mandibles smooth, sparsely punctate.

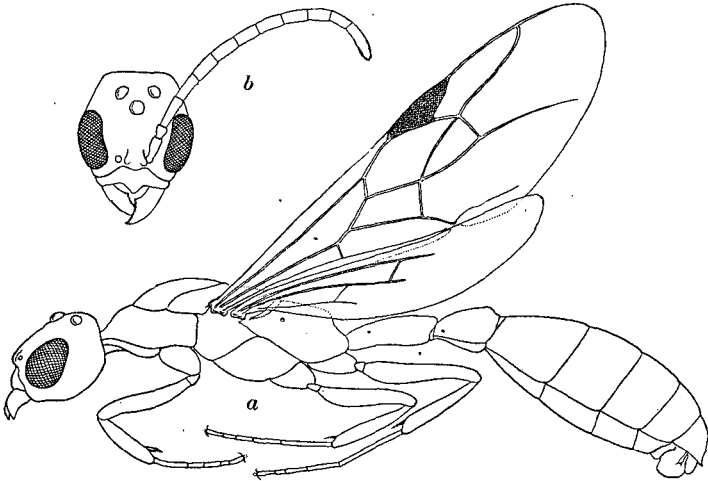


Fig. 3. *Pseudomyrma filiformis* Fabr. Male. *a*, lateral view; *b*, head of same, dorsal views.

Hairs whitish, short and very sparse; pubescence rather long and abundant, uniformly investing the body and appendages.

Brown; mandibles, clypeus, scape and first funicular joint, articulations and sutures of the body and legs dull ivory or brownish yellow. Wings a little darker than in the female.

Type-locality: "South America" (Smidt).

Brazil: Villa Nova (H. W. Bates).

Trinidad (Urich).