

broad as long but much smaller than the second joint of the club, which is distinctly longer than broad; terminal joint nearly twice as long as the preceding joint. The whole club is slightly longer than the remainder of the funiculus. Promesonotum somewhat longer than broad, subhemispherical in profile; epinotum narrower than the promesonotum, longer than broad, its base in profile straight and horizontal, slightly lower than the promesonotum and as long as the rather abrupt declivity into which it passes through a distinct angle. Petiole from above nearly square, the

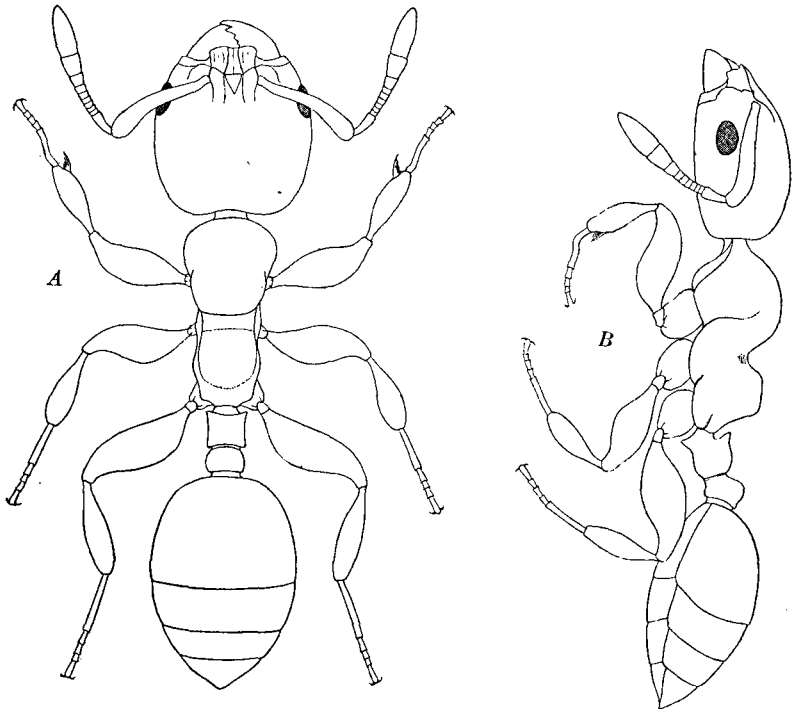


Fig. 1. *Myrmecinnella panamana*, new genus and new species. Worker. A, dorsal; B, lateral aspect.

sides feebly concave, the posterior corners nearly as sharp as the anterior corners which are formed by the ends of the peculiar, straight, transverse ridge; ventral surface with a large, triangular, downwardly directed tooth. Postpetiole as broad as the petiole but much shorter, nearly twice as broad as long, very convex and rounded above. Gaster rather flattened. Legs robust, with the femora, especially the fore and hind pairs, conspicuously thickened.

Mandibles shining, sparsely punctate; head, thorax, petiole and postpetiole subopaque. Clypeus with a few sharp longitudinal rugae. Front and sides of head punctate and finely, longitudinally rugulose; the longitudinal mid-dorsal third, from the front to the occiput very smooth and shining, with very minute, sparse, piliger-