

***Pheidole (Hendecapheidole) emersoni*, new species**

WORKER.—Length, 1.3–1.6 mm.

Head subrectangular, as broad as long, scarcely narrower in front than behind, with nearly straight lateral and feebly emarginate posterior borders. Apical borders of mandibles with numerous minute, uneven teeth. Clypeus moderately convex, with entire, transverse anterior border. Frontal area distinct, elongate; frontal groove absent; frontal carinae very small and short. Eyes moderately convex, situated just in front of the middle of the head, their ommatidia large and rather few in number. Antennal scapes almost reaching the posterior corners of the head; first funicular joint fully twice as long as broad; second joint as long as broad, joints 3–7 shorter, club longer than the remainder of the funiculus, its two basal joints distinctly

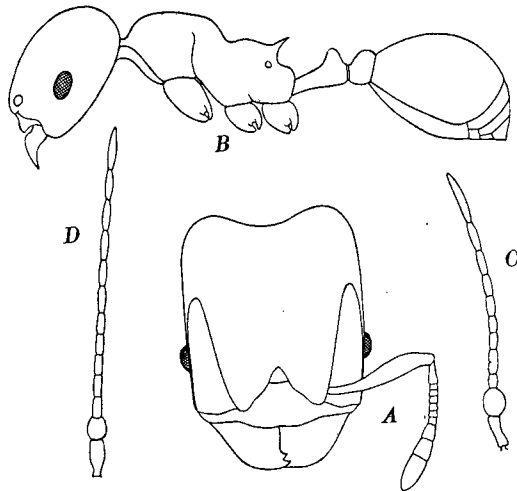


Fig. 2. A, *Pheidole (Hendecapheidole) tachigaliæ* Wheeler, head of soldier; B, *Pheidole (Hendecapheidole) emersoni*, new species; C, antenna of male of same species; D, antenna of male of *Pheidole pilifera* Roger.

longer than broad, together slightly shorter than the large terminal joint. Thorax similar to that of the *tachigaliæ* worker, the pro- and mesonotum forming a single convex mass, without suture or transverse welt, but the humeri are rounded and not prominent as in *tachigaliæ*. Mesoëpinotal constriction short and deep; epinotum small, the base convex in profile, not longer than the declivity, the spines straight, acute, longer than broad at their bases but shorter than their distance apart, directed upward, outward and backward. Petiole small and slender, fully twice as long as broad and scarcely broader behind than in front, its sides straight and subparallel the node rather low but somewhat compressed anteroposteriorly, its border blunt and entire. Postpetiole small, only slightly broader than the petiole, broader than long, evenly rounded dorsally and laterally. Gaster oval, convex above, the anterior border of the first segment straight and transverse in the middle. Legs of the usual shape.