

monwealth. Emery gives the length of the type specimen as 2.75 mm. My specimens are somewhat larger (3.2 mm.) and Forel's measured 3-3.2 mm. The petiole when viewed from above is decidedly broader than long, the postpetiole and gaster are decidedly shining, the former densely punctate, with super-

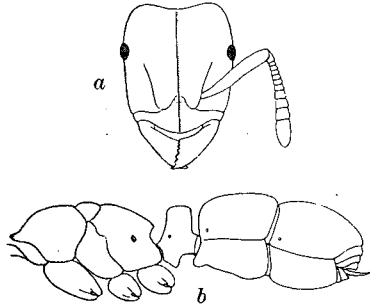


Fig. 2. *Acanthoponera (Anacanthoponera) imbellis* Emery, worker. *a*, head from above *b*, thorax and abdomen in profile.

imposed, scattered, larger punctures, or foveolæ, which have sharp anterior borders so that they are somewhat "eingestochen", to use a German expression. The color appears to be rather variable, the gaster being sometimes dark brown like the head or like both the head and thorax, sometimes paler brown with only the head dark.

#### Var. *hilaris* Forel.

*Ectatomma (Acanthoponera) imbellis* var. *hilaris* Forel, Ann. Soc. Belg. 39, 1895, p. 421 ♀.

*Acanthoponera imbellis* var. *hilaris* Emery, Gen. Insect. Ponerinae 1911, p. 10 ♀.

According to Forel, this variety, taken at Mackay, Queensland (Gilbert Turner), is larger than the type (3.6 mm.) and differs in sculpture as follows: "Abdomen densely punctate and subopaque. All the remainder densely and finely reticulate-punctate and opaque. Moreover, the front is coarsely longitudinally rugose, while the other portions of the head, the thorax