

Var. *schwebeli* Luederwaldt.

*Acanthoponera dolo* var. *schwebeli* Luederwaldt Revist. Mus. Paul. 1918, p. 54 ♀; German transl. São Paulo 1920, p. 3 ♀; Notas Myrmecologicas, São Paulo 1918, p. 6.  
Type locality: Alto da Serra, São Paulo, Brazil (E. Schwebel)

*Acanthoponera goeldii* Forel.

*Acanthoponera goeldii* Forel, Ann. Soc. Ent. Belg. 56, 1912, p. 34 ♀.  
Type locality: Prov. Espiritu Santo, Brazil (Goeldi).

Subsp. *schwarzi* subsp. nov.

(Fig. 5.)

*Worker*. Length 4.5 mm.

Agreeing well with Forel's description of the type but smaller, with the petiolar spine as long as the epinotal spines and apparently directed somewhat more upward. The epinotal spines diverge and their downward deflection is feeble. There is no constriction between the postpetiole and gaster. The color seems to be paler, being brownish yellow, the postpetiole and

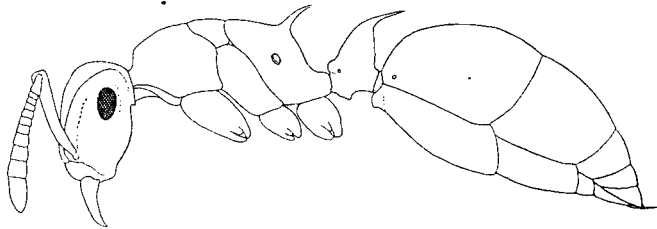


Fig 5. *Acanthoponera goeldii* subsp. *schwarzi* subsp. nov. Worker, lateral aspect.

gaster lighter than the head and thorax (darker in the typical *goeldii*), as pale as the legs, only the overlapping posterior borders of the segments brown. Judging from the description of *goeldii*, the sculpture of the head, thorax and petiole is finer and more indistinct and the postpetiole and gaster are not aciculate, but very finely and superficially punctulate. Pubescence on these