

an 11-jointed left antenna. The right antenna is broken so that the number of its joints cannot be ascertained. This and similar specimens, which one finds occasionally in *Tetramorium* and other ant-genera, are probably to be regarded as exhibiting "intersexual" rather than gynandromorphic traits since in the case mentioned the number of antennal joints is intermediate between the ten of the normal male and the twelve of the normal female.

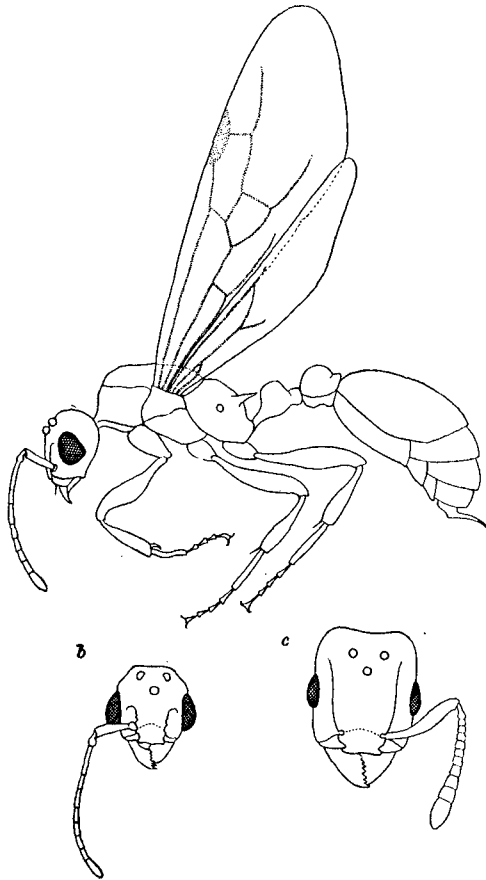


Fig. 1. Gynandromorph of *Tetramorium guineense* Fabr. a, lateral view; b, anterior view of head; c, head of normal female.