

out any traces of eyes or ocelli. Mandibles very small, narrow and convex, with four minute, indistinct, oblique teeth. Clypeus as in *P. filiformis*, projecting forward and concealing the mandibles and with a median ridge formed by the coalescence of the frontal carinae which terminate posteriorly in a short bifurcation. Frontal groove absent. Antennae stouter than in *filiformis*, the scapes reaching to about the posterior fifth of the head; first funicular joint not longer than broad; joints 2-10 decidedly

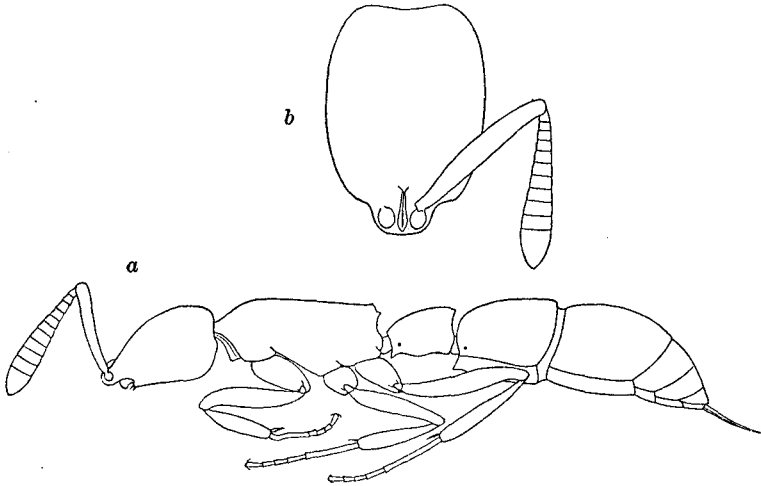


Fig. 1. *Probolomyrmex dammermani* sp. nov. worker. a, profile view; b, dorsal view of head more enlarged.

broader than long, gradually increasing in width apically, the penultimate joint more than twice as broad as long, the terminal joint glandiform, not more than one-third longer than broad and scarcely as long as the three preceding joints together. Thorax shaped much as in *filiformis*, long and narrow, without sutures, the dorsal outline even and straight, except anteriorly where it is feebly convex. Prosternal angles sharp; epinotal declivity perpendicular and concave, on the sides sharply marginate and distinctly dentate. Petiole elongate, laterally compressed, from above nearly twice as long as broad, about one-fourth broader behind than in front, and with feebly rounded sides; in profile nearly one and one-half times as long as high