

very long and slender; middle and hind tibiae without spurs; tarsal claws slender and simple.

Genotype: *Chapmanella negrosensis* sp. nov.

***Chapmanella negrosensis* sp. nov.**

Worker.—Length 4 mm.

Head longer than broad, subelliptical, broadest through the middle where the small eyes, consisting of only about 16

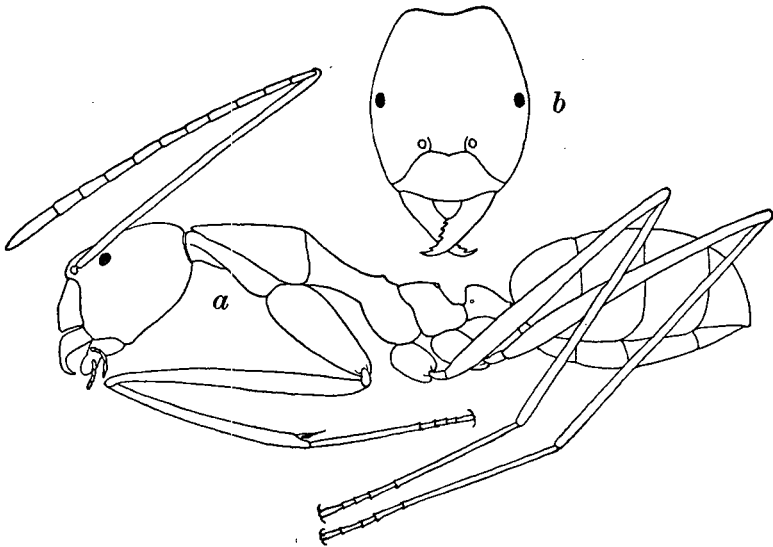


Fig. 1. *Chapmanella negrosensis* gen. et sp. nov. *a*, Worker, in profile; *b*, head of same, dorsal view.

ommatidia, are situated, the occipital border concave. Antennal scapes straight, extending more than half their length beyond the occipital border; all the joints of the funiculus except the last, subequal, nearly three times as long as broad, the last joint somewhat pointed, as long as the two penultimate joints together. Mandibles 6-toothed, the terminal tooth long and curved, the remaining teeth