

ture posterior border. Eyes moderately large and convex, placed a little in front of the middle of the sides of the head. Surface of clypeus rather flat, slightly projecting but scarcely subcarinate in the middle, the anterior border transverse, feebly sinuate on each side. Mandibles with nearly straight external and somewhat oblique apical bor-

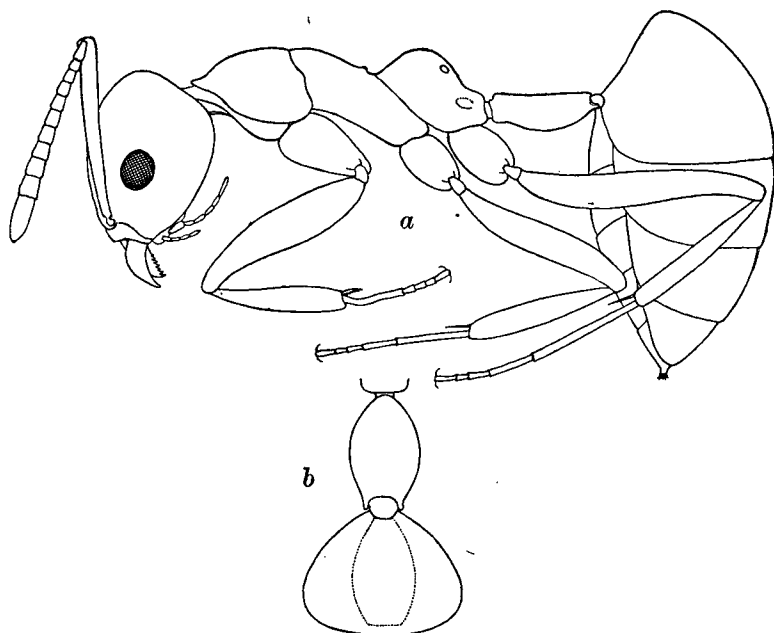


Fig. 2. *Aphantolepis quadricolor* gen. et sp. nov. *a*, Worker, in profile; *b*, petiole and anterior portion of first gastric segment, dorsal view.

ders, the latter with seven small, acute teeth, which are somewhat crowded and subequal, except the basal and third tooth from the apex, which are smaller. Antennal scapes extending nearly one-third their length beyond the posterior border of the head; first funicular joint twice as long as broad, nearly as long as the two succeeding joints together; joints 2-10 only slightly longer than broad, the terminal joint as long as the two penultimate joints together. Pro-