

nearly $1\frac{1}{2}$ times as long as broad, gradually narrowed anteriorly, posteriorly with rounded-subparallel sides. Post-petiole rounded-trapezoidal, nearly as long as broad, somewhat broader than the petiole and somewhat wider behind than in front, its ventral surface convex and projecting. Gaster narrow, elongate-elliptical, anterior border of first segment slightly concave. Sting large, retracted. Legs mod-

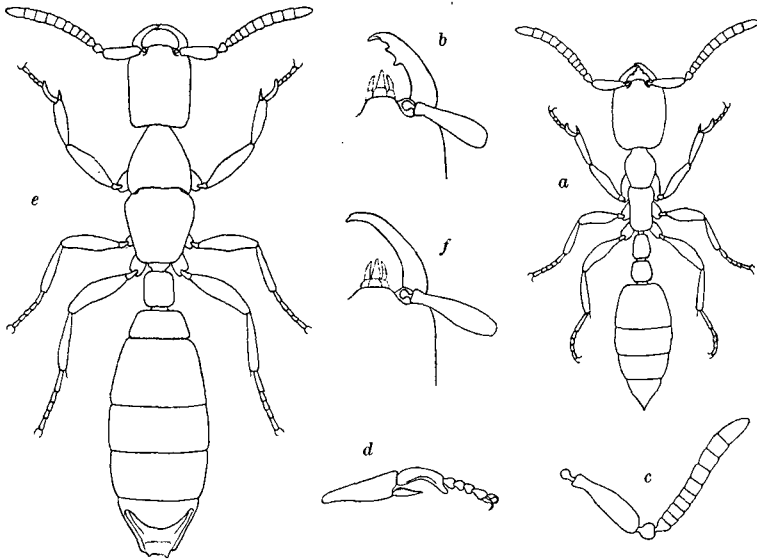


FIG. 1. *Leptanilla swani* sp. nov. a, worker; b, clypeus and mandible of same; c, antenna; d, fore tibia and tarsus; e, female; f, clypeus and mandible of same.

erately stout, tips of fore metatarsi produced and digitiform, but not so narrowly as in *L. nana* Santschi.

Shining, with very fine and indistinct piligerous punctures. Pilosity white, very short, abundant both on the body and antennæ, slightly longer and coarser on the gaster, less conspicuous and more dilute and appressed on the legs.

Female. (Fig. 1, e and f.) Length 2 mm.

Color, sculpture and pilosity as in the worker, but the hairs on the gaster very long, though fine, as in the female of *L. theryi* Forel.