

JULY 17, 1933

VOL. XIII, PP. 73-75

PROCEEDINGS  
OF THE  
NEW ENGLAND ZOÖLOGICAL CLUB

---

A NEW MYRMOTERAS FROM JAVA

BY WILLIAM MORTON WHEELER

---

**Myrmoteras kemneri** sp. nov.

(Figure 1)

*Worker.* Length, 6 mm.

Closely related to *M. barboursi* Creighton of Java, but somewhat smaller and differing in the following characters: Mandibles with a closely approximated pair of denticles between the long apical and subapical teeth. Of these denticles the proximal is decidedly smaller than the distal. Clypeus less flattened than in *barboursi* and more sharply subcarinate. Thorax very similar, but the neck more slender, the pronotum broader and more transverse behind, the mesonotum widening less abruptly into the epinotum, with dorsally more projecting metanotal spiracles and the epinotum in profile distinctly longer, with more elongate base. Petiole with shorter anterior and posterior peduncles, and distinctly thicker and apically more broadly rounded node.

Bases of mandibles, the head, except the vertex and occipital fold, the mesonotum, epinotum, petiole and gaster distinctly less shining; the dorsal surface of the head more sharply coriaceous, or densely punctate, the pronotum less opaque, coria-

ceous like the head, but more superficially; the mesonotum obliquely rugose on the sides as in *barbouri*, but not transversely rugose dorsally as in that species, its surface and that of the epinotum and petiole opaque, smooth, without distinct sculpture, only the summit of the petiolar node shining; gaster more shining than the epinotum, but decidedly less so than in *barbouri*, very indistinctly coriaceous, with fine, sparse, piligerous punctures. Antennæ and legs also somewhat less shining.

Hairs delicate and erect as in *barbouri*, but white instead of yellow, and somewhat more numerous on the thorax, gaster and tibiæ.

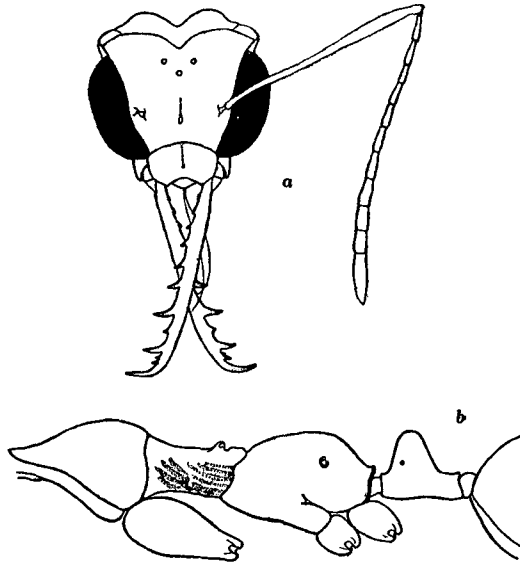


Fig. 1. *Myrmoteras kemneri* sp. nov. Worker.  
a, head, dorsal view; b, thorax and petiole, lateral view.

Color very similar, but the head and thorax slightly darker red, the petiole and basal half of the first gastric segment paler and more yellowish red, the appendages perceptibly darker yellowish brown.

A single specimen taken by Dr. N. A. Kemner at Tjibodas, Java, May 29, 1921. This form might be regarded as a subspecies of *barbouri*, which is also known from a single specimen. Additional material will show whether *kemneri* deserves to rank as an independent species. Creighton's table for identification of the known species of *Myrmoteras* is here appended, with the insertion of the form above described.

KEY TO THE SPECIES OF MYRMOTERAS

1. Frontal furrow well developed, extending back to the anterior ocellus 2.  
Frontal furrow absent or not extending beyond the anterior third of the head . . . . . 5.
2. Head opaque, completely coriaceous, except the occipital fold. Length, 3.9 mm. Philippines . . . . . *williamsi* Wheeler  
Head smooth and shining; sculpture if present consisting of striæ on front and clypeus . . . . . 3.
3. Head entirely smooth. Female: length, 4 mm. Borneo . . *bakeri* Wheeler  
Front and clypeus striate . . . . . 4.
4. Mandibles 14-toothed; denticles between apical and sub-apical teeth not well developed. Female: length, 4.5 mm. Borneo . . . . .  
. . . . . *donisthorpei* Wheeler  
Mandibles 9-toothed; denticles between apical and sub-apical teeth well developed. Length, 5.3 mm. Burma . . . . . *binghami* Forel
5. Head completely smooth and very shining. Length, 5–5.6 mm. Borneo . . . . . *mjöbergi* Wheeler  
Head coriaceous, sub-opaque . . . . . 6.
6. Mandibles with a pair of denticles between the apical and sub-apical teeth; meso- and epinotum opaque. Length, 6 mm. Java . . . . .  
. . . . . *kemneri* Wheeler  
Mandibles without denticles between the apical and sub-apical tooth; meso- and epinotum shining. Length, 6.9 mm. Java . . . . .  
. . . . . *barbouri* Creighton.