

ceous like the head, but more superficially; the mesonotum obliquely rugose on the sides as in *barbouri*, but not transversely rugose dorsally as in that species, its surface and that of the epinotum and petiole opaque, smooth, without distinct sculpture, only the summit of the petiolar node shining; gaster more shining than the epinotum, but decidedly less so than in *barbouri*, very indistinctly coriaceous, with fine, sparse, piligerous punctures. Antennæ and legs also somewhat less shining.

Hairs delicate and erect as in *barbouri*, but white instead of yellow, and somewhat more numerous on the thorax, gaster and tibiæ.

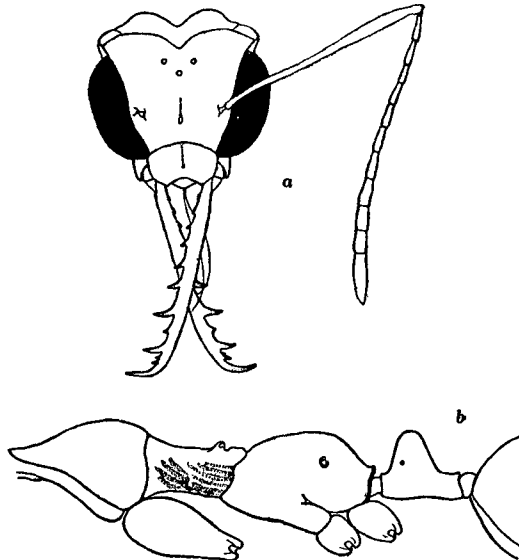


Fig. 1. *Myrmoteras kemneri* sp. nov. Worker.
a, head, dorsal view; b, thorax and petiole, lateral view.

Color very similar, but the head and thorax slightly darker red, the petiole and basal half of the first gastric segment paler and more yellowish red, the appendages perceptibly darker yellowish brown.