

FEMALE (undescribed).—Length, 2.3–2.5 mm.

Head like that of the worker but the sides nearly straight and parallel. Mandibles 5-toothed, the subapical tooth somewhat smaller than the others. Eyes flat, separated by less than half their length from the anterior corners of the head; ocelli distinct, rather widely separated. Clypeus short, subcarinate in the middle, depressed on the sides, its anterior border broadly rounded. Antennal scapes as in the worker. Pronotum rounded anteriorly and laterally, about twice as long as broad; mesonotum small, flat, trapezoidal, nearly as long as broad; epinotum subcuboidal, its base as broad as long, not narrowed anteriorly, shorter than the rather steeply sloping declivity, more rounded at the sides. Petiole like that of the worker, but the posterior surface of the node distinctly concave. Postpetiole somewhat broader behind than long, concave anteriorly at the insertion of the petiole.

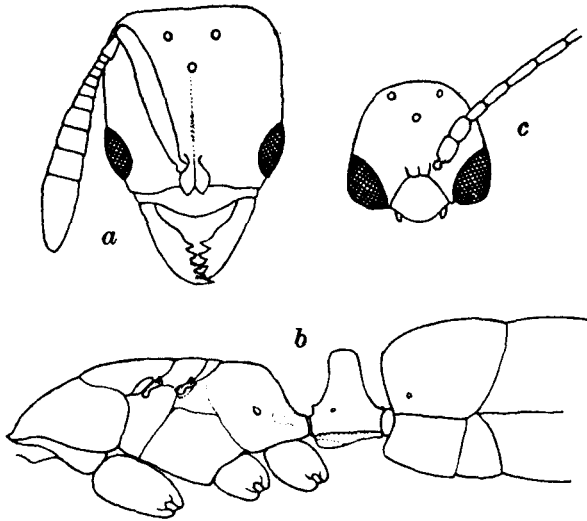


Fig. 3. *Cryptopone butteli* Forel.

a, head of female, dorsal view; b, thorax and pedicel, lateral view; c, head of male, dorsal view.

Mandibles shining, sparsely and finely punctate; remainder of body opaque or subopaque, except the epinotum, which is distinctly shining. Head densely, remainder of body finely and more superficially punctate.

Pubescence fine, abundant, short and dense as in the worker; hairs short, confined to the clypeus and terminal gastric segments; middle tibiae with numerous short bristles on their extensor surfaces. Eyes hairy. Wing membranes finely and densely pubescent.

Reddish brown; head and gaster somewhat darker; ocellar triangle black; pleurae, clypeus, mandibles, and antennae brownish yellow; legs paler yellow. Wings long, dull, brownish, the veins and pterostigma darker brown; tegulae and wing insertions yellow.

MALE (undescribed).—Length, about 2 mm.

Head through the large and prominent eyes as broad as long, rounded and somewhat narrowed posteriorly. Eyes very close to the anterior corners of the head, so