

slightly broader than the head; mesonotum convex, somewhat broader than long, with a short, median groove anteriorly. Epinotum small and low, rounded, without very distinct base and declivity. Petiolar node lower in profile than in the worker, with straight anterior slope. Gaster and legs long and slender. Wings distinctly longer than in *butteli*.

Subopaque; abdomen more shining; head coarsely, remainder of body more finely punctate.

Pubescence and pilosity as in the worker, but the hairs, though sparse, more uneven and more generally distributed. Eyes hairy; wing membranes densely pubescent.

Piceous brown, appendages slightly paler; head black; wings more infuscated than in *butteli*, with brown veins and pterostigma.

Described from two workers and three males taken by Dr. E. Mjöberg on Mt. Poi, Sarawak, Borneo.

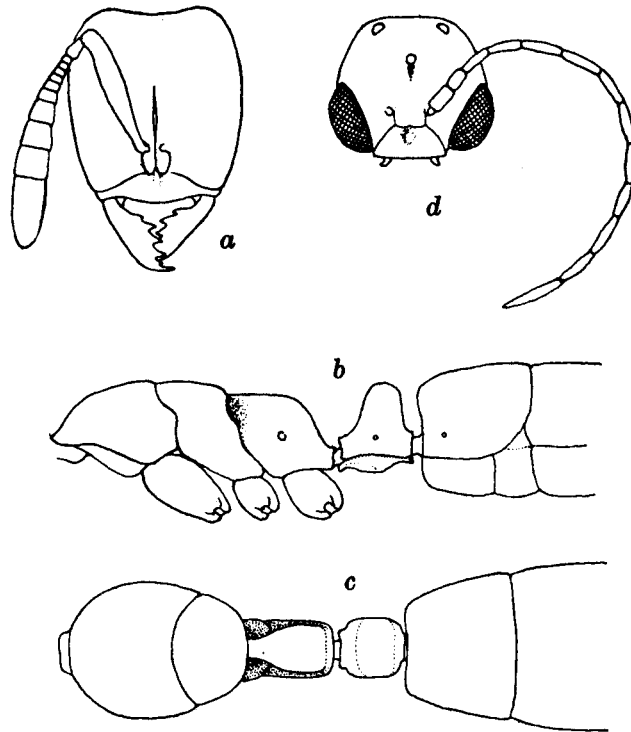


Fig. 4. *Cryptopone sarawakana*, new species.

a, head of worker, dorsal view; b, thorax and pedicel, lateral view; c, same, dorsal view; d, head of male, dorsal view.

#### PSEUDOCRYPTOPONE, new genus

WORKER.—Closely resembling the worker of *Ponera*: small and slender. Head subrectangular, decidedly longer than in *Cryptopone*. Eyes absent or vestigial and minute, situated near the anterior corners of the head. Mandibles broad, triangular,