

rather generally distributed but more numerous on the abdomen, longer on the clypeus.

Brownish yellow; appendages not paler than the body; anterior border of clypeus and masticatory border of mandibles red.

Described from eleven specimens taken by Mr. R. H. Van Zwaluwenburg at Waimalo, Waialua, and Waipio on Oahu Island, and also on Maui Island, Hawaii. They were living some inches below the surface in the soil of both cultivated and fallow sugar-cane fields.

***Pseudocryptopone swezeyi*, new species**

Figure 6, a to d

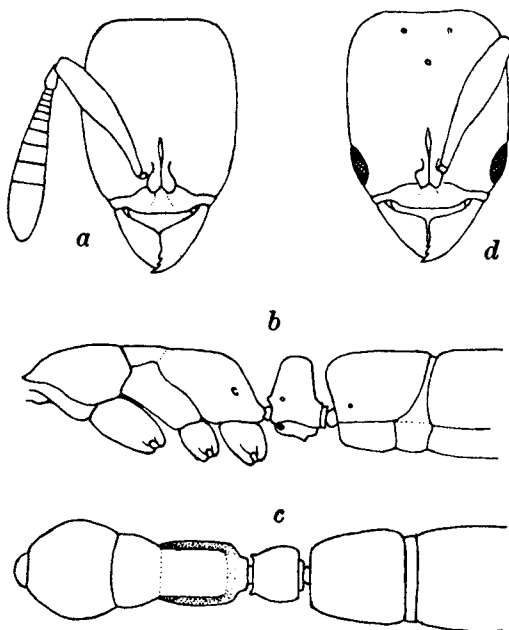


Fig. 6. *Pseudocryptopone swezeyi*, new species.

a, head of worker, dorsal view; b, thorax and pedicel, lateral view; c, same, dorsal view; d, head of female, dorsal view.

WORKER.—Length, 1.2–1.4 mm.

Head subrectangular, nearly one-third longer than broad and nearly as wide in front as behind, with feebly and evenly rounded sides and straight posterior border. Eyes absent. Mandibles with three small, very oblique apical teeth. Clypeus bluntly subcarinate, its anterior border nearly straight and transverse in the middle, sinuate on each side. Frontal carinae small, closely approximated; frontal groove distinct, reaching nearly to the middle of the head. Antennal scapes distinctly incrassated and somewhat flattened distally, reaching to a distance less than their greatest diameter from the posterior border of the head; funiculi with all the joints, except the first and last, much broader than long, the club thick, indistinctly 5-jointed. Thorax narrow,