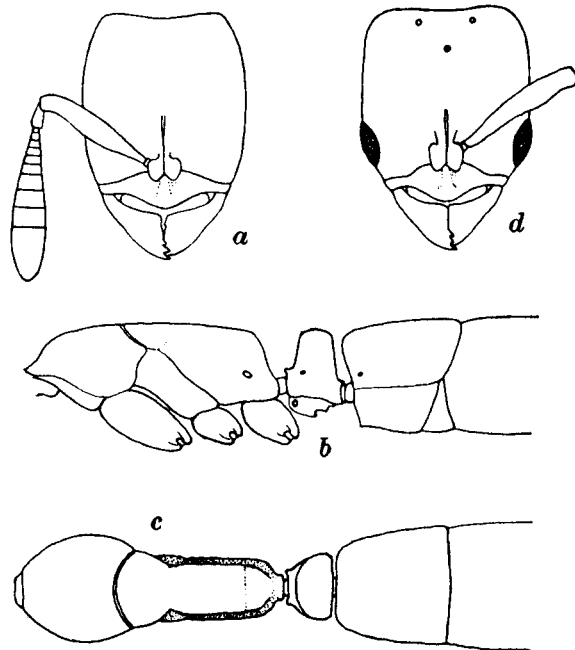


***Pseudocryptopone incerta*, new species**Figure 7, *a* to *d*

WORKER.—Length, 1.5 mm.

Head suboblong, one-fourth longer than broad, with nearly straight, subparallel sides and distinctly concave posterior border. Eyes present, minute, at about the anterior sixth of its sides. Mandibles with three small apical teeth; basal portion of masticatory border finely and indistinctly crenulate. Clypeus subcarinate, its anterior border produced in the middle, sinuate on the sides. Frontal carinae small, closely approximated, ciliated; frontal groove distinct as far back as the middle of the head. Antennal scapes reaching to its posterior sixth; clubs of funiculi thick, indistinctly 5-jointed, basal joints, except the first, short and transverse. Thorax in profile with nearly straight horizontal outline; promesonotal suture distinct, arcuate; meso-

Fig. 7. *Pseudocryptopone incerta*, new species.

a, head of worker, dorsal view; *b*, thorax and pedicel, lateral view; *c*, same, dorsal view; *d*, head of female, dorsal view.

epinotal suture absent; base of epinotum parallel-sided, longer than the declivity which is straight and marginate laterally. Petiole decidedly higher than long, node somewhat narrowed above in profile, with straight anterior and posterior slopes, the superior border straight and horizontal; seen from above the petiole is broader than long and broader behind than in front, the node semicircular, its anterior surface regularly curved from side to side, its posterior surface flat. Postpetiole nearly as broad as long, its anterior surface strongly truncated and inclined downward and backward. First gastric segment nearly as long as and slightly broader than the postpetiole; remaining segments very small. Sting well-developed. Legs rather slender.