

Compared with the typical *membranifera*, the worker of the Mississippi form, which Dr. Smith and I referred to *simillima*, exhibits the following differences in addition to those mentioned by Emery: the pronotum is distinctly broader, with more pronounced anterior and lateral margination and smoother and more

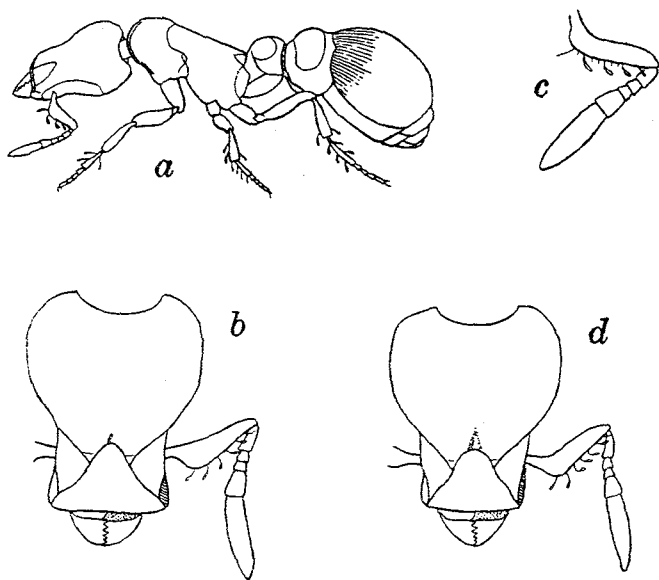


Figure 1. *Strumigenys (Cephaloxys) membranifera* Emery. *a*, worker; *b*, head; *c*, antenna; *d*, dorsal view of head of the subspecies *simillima* Emery. (After Emery)

shining surface, the body is of a distinctly deeper ferruginous color, the clavate hairs of the vertex, antennal scapes, legs, venter and tip of gaster and the spongiform appendages of the petiole and postpetiole are more sordid and not pure white as in the typical Italian form. Since these characters are not mentioned by Emery the Mississippi form may be regarded, at least provisionally, as a distinct variety, for which I suggest the name *marioni* var. nov.

The worker specimens taken by Dr. Williams in Hawaii and which I shall call var. *williamsi* var. nov., closely resemble those