

humeral angles produced as thick, blunt projections, its posterior corners subrectangular, small but distinctly projecting beyond the lateral border of the mesonotum. Mesonotum in profile rounded and sloping, continuing the even convexity of the pronotum, from above broader than long. Epinotum longer than broad, broader behind than in front, its base straight

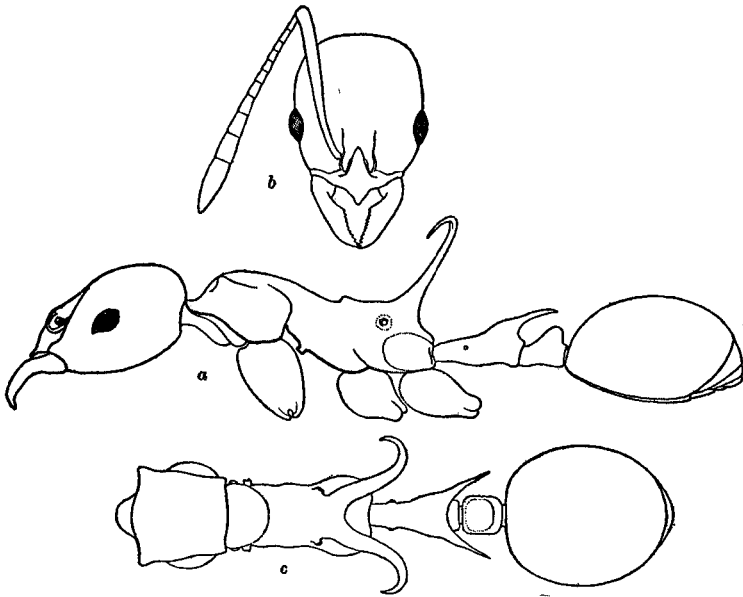


Figure 1. *Ancyridris polyrhachioides* sp. nov.
Worker: *a*, lateral aspect; *b*, head, dorsal aspect; *c*, thorax and
pedicel, dorsal aspect.

and horizontal, rising slightly and abruptly at its anterior end above the mesoepinotal impression, decidedly longer than the sloping concave declivity. The large epinotal spines are stout at the base, directed outward, upward and backward, with their flattened apical thirds turned downward, laterally and forward. Petiole about three times as long as broad, broader behind at the node than in front, the sides nearly straight, except for the projecting spiracles on the peduncle, in profile with the dorsal surface of the