

*Paratype queen (fig. 1).* Head width 0.77 mm, head length 0.76 mm, scape length 0.70 mm, eye length 0.31 mm. Overall closely similar to the holotype. Apparently newly dealated, possibly during capture: long wing stubs, including some hyaline portions, are still present.

*Male paratypes, 2 specimens (fig. 2).* Head width (including eyes) 0.66, 0.68 mm; head length 0.56, 0.60 mm; scape length 0.20, 0.18 mm; eye length 0.24, 0.27 mm. Mandibles with a well developed masticatory border bearing an apical, subapical, and three evenly spaced and smaller posterior teeth. Pilosity similar to that of queen, except that a majority of hairs stand 45° or more away from the surface and almost none are completely appressed. Many on the propodeum and petiole are hooked or sinuous. Color yellowish brown, similar to that of the queen.

Jorhat, Assam, India: 2 queens and 2 males (A.C. COLE, March 1944). Collected with minor and major workers of *Pheidole indica* Mayr, a widespread Asiatic species.

In addition to the association with *P. indica* just noted, the parasitic nature of *P. lanuginosa* is suggested by the following combination of anatomical features of the queens: small size, smooth body surface, elongate scapes, relatively thin, lightly colored exoskeleton, and appressed to decumbent curving pilosity. Most of these traits cannot be considered individually very

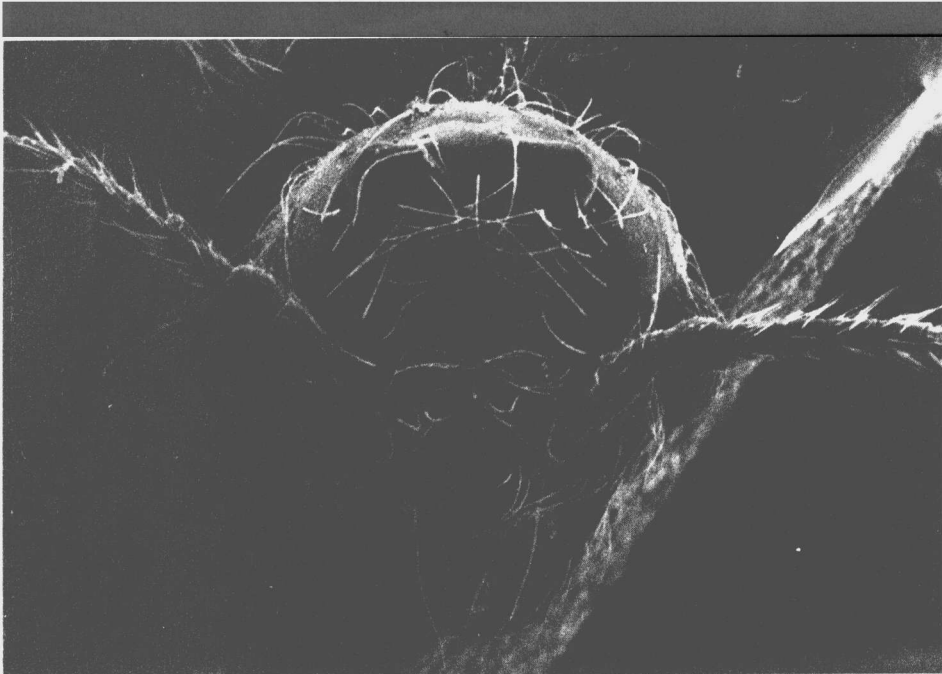


Fig. 2. — Paratype male of *Pheidole lanuginosa* n. sp., frontal view of head.

Abb. 2. — Paratypus des Männchens von *Pheidole lanuginosa* n. sp.; Vorderansicht des Kopfes.