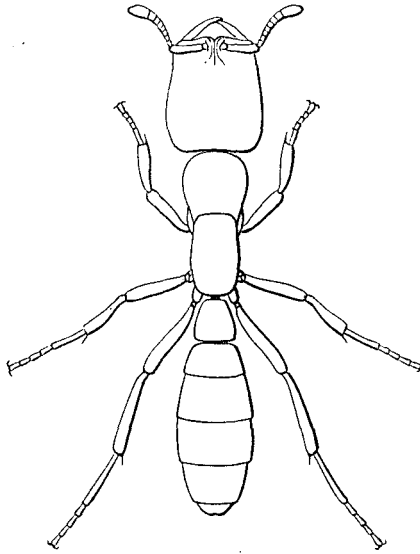
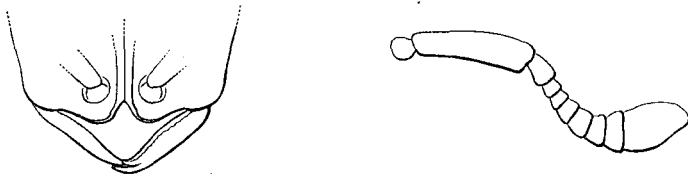


A. Antinorii n. sp.

♀. *Testaceo-fusca, capite obscuriore, abdomine piceo, tota superficie corporis subtilissime reticulata sparse punctata, punctis piligeris, pilis antennarum, capitis et thoracis brevibus, flavis, abdominis et pedum longioribus: capite angulis posticis valde rotundatis, margine postico haud emarginato, clypeo magno, convexo, antice inter mandibulas late producto; mandibulis punctatis, mar-*



Alaopone Antinorii ♀.



Alaopone Antinorii ♀.

gine interno denticulato, apice acutissime bidentatis, antennis crassis, articulis ultimis longitudine multo crassioribus, ultimo maximo, praecedentium trium longitudine; thorace dorso subrecto, convexo,